

## Product datasheet for **TA307281**

### ROR2 Rabbit Monoclonal Antibody [Clone ID: **EPR3779**]

#### Product data:

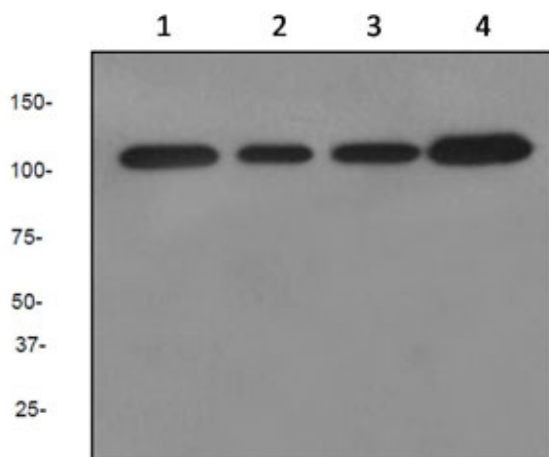
Product Type:	Primary Antibodies
Clone Name:	EPR3779
Applications:	FC, IHC, WB
Recommended Dilution:	WB: 1:1000 - 1:10000; ICC: 1:50 - 1:100; FC: 1:10 - 1:100
Reactivity:	Human (Does not react with: Mouse, Rat)
Host:	Rabbit
Isotype:	IgG
Clonality:	Monoclonal
Immunogen:	A synthetic peptide corresponding to residues of human ROR2 was used as an immunogen.
Formulation:	PBS 49%, Sodium azide 0.01%, Glycerol 50%, BSA 0.05%
Conjugation:	Unconjugated
Storage:	Store at -20°C as received.
Stability:	Stable for 12 months from date of receipt.
Gene Name:	receptor tyrosine kinase like orphan receptor 2
Database Link:	<a href="#">NP_004551</a> <a href="#">Entrez Gene 26564 Mouse</a> <a href="#">Entrez Gene 306782 Rat</a> <a href="#">Entrez Gene 4920 Human</a> <a href="#">Q01974</a>
Background:	ROR2 (receptor tyrosine kinase-like orphan receptor 2) is a tyrosine protein kinase receptor which is required for cartilage and growth plate development. As a member of the receptor protein kinases (RTKs) family, ROR2 is commonly found in embryonic kidney, but its function has not been fully understood. ROR2 has been linked to embryonic development due its involvement in WNT signaling pathway. Additionally, ROR2 has been shown to be critical for the formation of skeleton, heart, and genitals. Specifically, ROR2 phosphorylates 14-3-3 protein beta/alpha which leads to induction of osteogenesis and bone formation (2). A mutation in ROR2 is commonly seen in Robinow syndrome and autosomal dominant brachydactyly B disorders (3).
Synonyms:	BDB; BDB1; NTRKR2
Note:	Is unsuitable for IHC-P or IP.



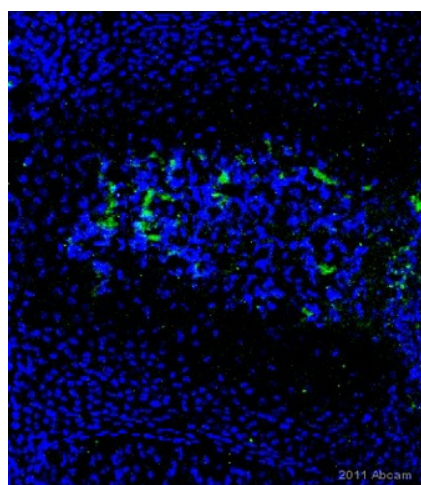
[View online »](#)

Protein Families: Druggable Genome, Protein Kinase, Transmembrane

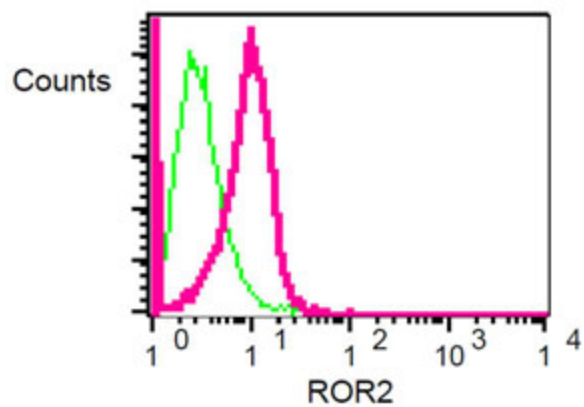
### Product images:



Western blot - ROR2 antibody [EPR3779]; All lanes : Anti-ROR2 antibody [EPR3779] at 1/1000 dilution. Lane 1 : HeLa cell lysate. Lane 2 : MCF-7 cell lysate. Lane 3 : SH-SY5Y cell lysate. Lane 4 : Saos-2 cell lysate. Lysates/proteins at 10 ug per lane. Secondary. HRP labelled goat anti-rabbit. at 1/2000 dilution. Predicted band size : 105 kDa.



IHC (Frozen sections) - Anti-ROR2 antibody; TA307281 staining ROR2 in Mouse cartilage precursor to endochondral bone tissue by IHC (Frozen sections). The sections were PFA-fixed prior to blocking with 20% serum for 1 hour at 19°C and permeabilization with 0.1% Triton. The primary antibody was diluted 1/50 and incubated with the sample for 16 hours at 4°C. An Alexa Fluor<sup>®</sup> 647-conjugated Rabbit polyclonal was used as the secondary antibody, diluted 1/200. DAPI was used for the blue counterstain.



Flow Cytometry - ROR2 antibody [EPR3779]; Flow cytometric analysis of HeLa cells using TA307281 at 1/10 dilution (red) or a rabbit IgG (negative) (green).