

Product datasheet for **TA307256**

PIK3CD Rabbit Monoclonal Antibody [Clone ID: EPR386]

Product data:

Product Type:	Primary Antibodies
Clone Name:	EPR386
Applications:	WB
Recommended Dilution:	WB: 1:1000 - 1:10000; ICC: 1:100 - 1:250
Reactivity:	Mouse, Rat, Human
Host:	Rabbit
Isotype:	IgG
Clonality:	Monoclonal
Immunogen:	A synthetic peptide corresponding to residues in human PI3-kinase subunit delta was used as an immunogen.
Formulation:	pH: 7.40 Preservative: 0.01% Sodium azide Constituents: 50% Glycerol, 0.05% BSA
Purification:	Tissue culture supernatant
Conjugation:	Unconjugated
Storage:	Store at -20°C as received.
Stability:	Stable for 12 months from date of receipt.
Predicted Protein Size:	119 kDa
Gene Name:	phosphatidylinositol-4,5-bisphosphate 3-kinase catalytic subunit delta
Database Link:	NP_005017 Entrez Gene 18707 Mouse Entrez Gene 366508 Rat Entrez Gene 5293 Human O00329
Background:	Phosphoinositide 3-kinases (PI3Ks) are a family of lipid kinases that are implicated in signal transduction. PI3Ks consists of two subunits; p85 and p10. The p85 subunit localize PI3Ks activity to the plasma membrane while the p110 subunit contains the catalytic domain of PI3Ks (1-2). Four isoforms of p110 has been found; the alpha, beta, gamma, and delta subunit (3). The delta isoform is predominantly expressed in leukocytes and has been shown to interact with p85 and GTP-bound Ras via its SH2/SH3 domain (4).



[View online »](#)

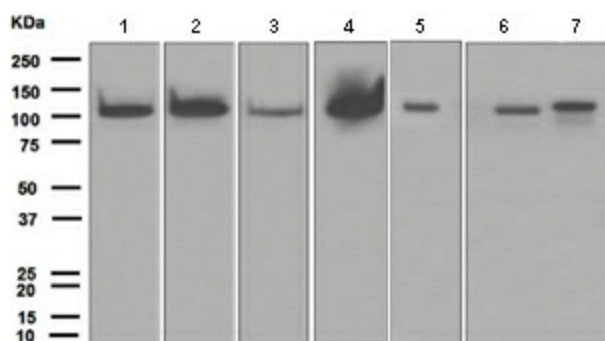
Synonyms: APDS; IMD14; p110D; P110DELTA; PI3K

Note: Is unsuitable for Flow Cyt, IHC-P or IP.

Protein Families: Druggable Genome

Protein Pathways: Acute myeloid leukemia, Apoptosis, B cell receptor signaling pathway, Chemokine signaling pathway, Chronic myeloid leukemia, Colorectal cancer, Endometrial cancer, ErbB signaling pathway, Fc epsilon RI signaling pathway, Fc gamma R-mediated phagocytosis, Focal adhesion, Glioma, Inositol phosphate metabolism, Insulin signaling pathway, Jak-STAT signaling pathway, Leukocyte transendothelial migration, Melanoma, mTOR signaling pathway, Natural killer cell mediated cytotoxicity, Neurotrophin signaling pathway, Non-small cell lung cancer, Pancreatic cancer, Pathways in cancer, Phosphatidylinositol signaling system, Progesterone-mediated oocyte maturation, Prostate cancer, Regulation of actin cytoskeleton, Renal cell carcinoma, Small cell lung cancer, T cell receptor signaling pathway, Toll-like receptor signaling pathway, Type II diabetes mellitus, VEGF signaling pathway

Product images:



Western blot - PI 3 Kinase p110 delta antibody [EPR386]; All lanes : Anti-PI 3 Kinase p110 delta antibody [EPR386] at 1/1000 dilution. Lane 1 : Jurkat cell lysate. Lane 2 : Raji cell lysate. Lane 3 : K562 cell lysate. Lane 4 : RAW 264.7 cell lysate. Lane 5 : Rat brain tissue lysate. Lane 6 : Rat kidney tissue lysate. Lane 7 : Rat spleen tissue lysate. Lysates/proteins at 10 ug per lane. Predicted band size : 119 kDa.