

Product datasheet for **TA307207**

LMO2 Rabbit Monoclonal Antibody [Clone ID: EP3257]

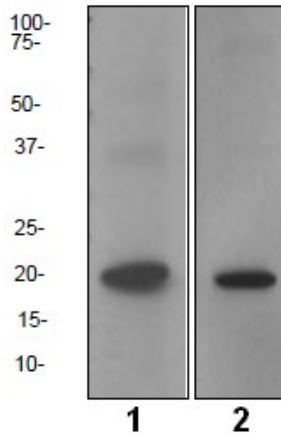
Product data:

| | |
|-------------------------|--|
| Product Type: | Primary Antibodies |
| Clone Name: | EP3257 |
| Applications: | FC, WB |
| Recommended Dilution: | FC: 1:100 - 500, IP: 1:100 - 500, WB: 1:1000 - 10,000 |
| Reactivity: | Mouse, Rat, Human |
| Host: | Rabbit |
| Isotype: | IgG |
| Clonality: | Monoclonal |
| Immunogen: | A synthetic peptide corresponding to residues in human LMO2 was used as an immunogen. |
| Formulation: | PBS 49%, Sodium azide 0.01%, Glycerol 50%, BSA 0.05% |
| Conjugation: | Unconjugated |
| Storage: | Store at -20°C as received. |
| Stability: | Stable for 12 months from date of receipt. |
| Predicted Protein Size: | 18 kDa |
| Gene Name: | LIM domain only 2 |
| Database Link: | NP_005565 Entrez Gene 16909 Mouse Entrez Gene 362176 Rat Entrez Gene 4005 Human P25791 |
| Background: | LMO2 (LIM-only protein 2, RBNT2), a member of the LIM-only class of transcriptional co-regulators that consist of two closely spaced cysteine-rich LIM domains has distinct functions in erythropoiesis and in T-cell leukemogenesis. These diverse functions of LMO2 are presumed to be accomplished through physical interaction with different with different protein partners that bind the LIM domains of LMO2 (1). It is also required for early stages of hematopoiesis, and the LMO2 master gene encodes a protein that has a central and crucial role in the hematopoietic development (2). LMO2 has been identified as a novel oncogene associated with carcinogenesis and prognosis in several malignant tumors (3) |
| Synonyms: | RBTN2; RBTNL1; RHOM2; TTG2 |
| Protein Families: | Druggable Genome |

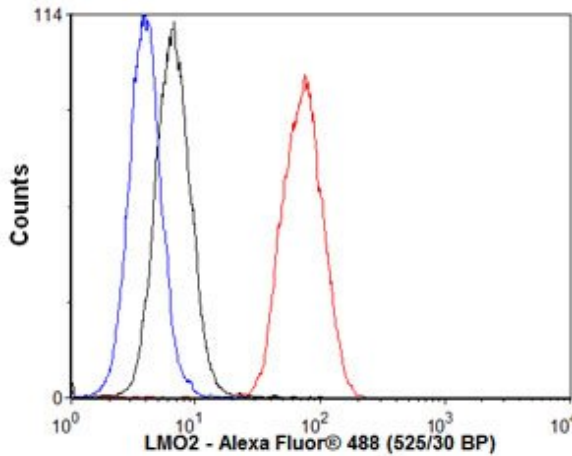


[View online »](#)

Product images:



Western blot - LMO2 antibody [EP3257]; All lanes : Anti-LMO2 antibody [EP3257] at 1/1000 dilution. Lane 1 : Raji cell lysate. Lane 2 : Fetal kidney lysate. Lysates/proteins at 10 ug per lane. Secondary. HRP labelled goat anti-rabbit at 1/2000 dilution. Predicted band size : 18 kDa.



Flow Cytometry - Anti-LMO2 antibody; Overlay histogram showing Ramos cells stained with TA307207 (red line). The secondary antibody used was Alexa Fluor 488 goat anti-rabbit IgG (H+L) at 1:2000. Isotype control antibody (black line) was rabbit IgG (monoclonal) (1ug/1x10⁶ cells) used under the same conditions. Unlabelled sample (blue line) was also used as a control. This antibody gave a positive signal in Ramos cells under the same conditions.