

Product datasheet for **TA307191**

Mesothelin (MSLN) Rabbit Monoclonal Antibody [Clone ID: PPI-2e(IHC)]

Product data:

Product Type:	Primary Antibodies
Clone Name:	PPI-2e(IHC)
Applications:	WB
Recommended Dilution:	WB: 1:1,000 - 10,000
Reactivity:	Human
Host:	Rabbit
Isotype:	IgG
Clonality:	Monoclonal
Immunogen:	A synthetic peptide corresponding to residues near the C-terminus of human Mesothelin was used as an immunogen. This antibody detects full-length Mesothelin precursor (69 kDa) and C-terminal cleaved form of Mesothelin (40 kDa).
Formulation:	PBS 49%,Sodium azide 0.01%,Glycerol 50%,BSA 0.05%
Purification:	Tissue culture supernatant
Conjugation:	Unconjugated
Storage:	Store at -20°C as received.
Stability:	Stable for 12 months from date of receipt.
Predicted Protein Size:	69 kDa
Gene Name:	mesothelin
Database Link:	NP_005814 Entrez Gene 10232 Human Q13421



[View online »](#)

Background:

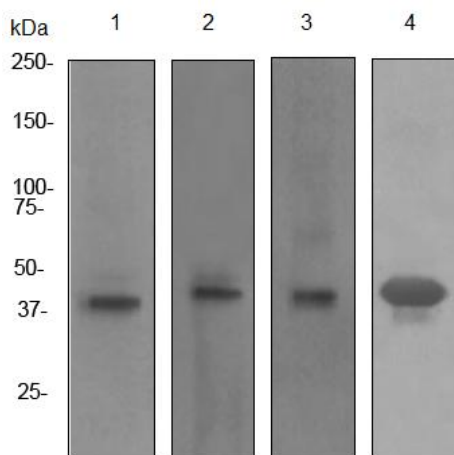
Mesothelin is a tumor differentiation antigen that is present on the surface of normal mesothelial cells lining the pleura, peritoneum and pericardium. It is over expressed in many human tumors, including malignant mesothelioma and ovarian, pancreatic and lung adenocarcinomas (1). The normal biologic function of mesothelin is unknown but recent studies have shown that it forms a strong and specific complex with MUC16; a binding which has been suggested to be the basis of ovarian cancer metastasis (2). Initially, mesothelin is produced as a polypeptide with a hydrophobic tail which is removed and replaced by phosphatidylinositol. After glycosylation at the one or more of its four putative N-linked glycosylation sites, it is cleaved by a protease to yield the 40 kDa fragment (or doublet) (3). Antibodies against MSLN are detected in patients with mesothelioma and ovarian cancer (4).

Synonyms:

MPF; SMRP

Protein Families:

Druggable Genome, Secreted Protein, Transmembrane

Product images:

Western blot - Mesothelin antibody [PPI-2e (IHC)]; All lanes : Anti-Mesothelin antibody [PPI-2e (IHC)] at 1/1000 dilution. Lane 1 : Fetal liver lysate. Lane 2 : Uterus cancer lysate. Lane 3 : Fetal pancreas lysate. Lane 4 : Ovary cancer lysate. Lysates/proteins at 10 ug per lane. Secondary. HRP labelled goat anti-rabbit antibody at 1/2000 dilution. Predicted band size : 69 kDa.