

Product datasheet for **TA307118**

PIP5KI gamma (PIP5K1C) Rabbit Monoclonal Antibody [Clone ID: MAO-R1]

Product data:

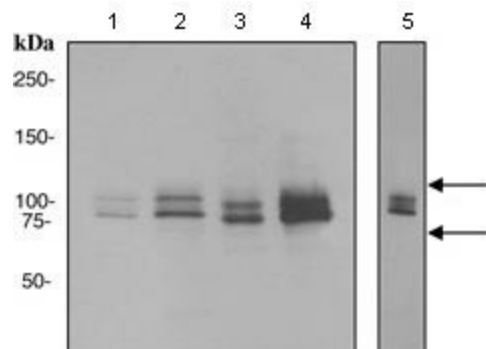
Product Type:	Primary Antibodies
Clone Name:	MAO-R1
Applications:	WB
Recommended Dilution:	WB: 1:1000 - 1:10000; IP: 1:10 - 1:100
Reactivity:	Mouse, Rat, Human
Host:	Rabbit
Isotype:	IgG
Clonality:	Monoclonal
Immunogen:	A full length recombinant mouse PIP5K1C was used as an immunogen.
Formulation:	PBS 49%, Sodium azide 0.01%, Glycerol 50%, BSA 0.05%
Purification:	Tissue culture supernatant
Conjugation:	Unconjugated
Storage:	Store at -20°C as received.
Stability:	Stable for 12 months from date of receipt.
Predicted Protein Size:	73 kDa
Gene Name:	phosphatidylinositol-4-phosphate 5-kinase type 1 gamma
Database Link:	NP_036530 Entrez Gene 18717 Mouse Entrez Gene 314641 Rat Entrez Gene 23396 Human O60331
Background:	PIP5K1C is a member of the type I phosphatidylinositol-4-phosphate 5-kinase family of enzymes (1). A similar protein in mice is found in synapses and focal adhesion plaques, and binds the FERM domain of talin through its C-terminus (1). PIP5K1C plays a role in membrane ruffling and assembly of clathrin-coated pits at the synapse (2). It is highly expressed in the forebrain, especially in the cerebellum, hippocampus and cerebral cortex (2).
Synonyms:	LCCS3; PIP5K-GAMMA; PIP5K1-gamma; PIP5Kgamma
Note:	Is unsuitable for Flow Cyt, ICC or IHC-P.
Protein Families:	Druggable Genome



[View online »](#)

Protein Pathways: Endocytosis, Fc gamma R-mediated phagocytosis, Focal adhesion, Inositol phosphate metabolism, Metabolic pathways, Phosphatidylinositol signaling system, Regulation of actin cytoskeleton

Product images:



Western blot - PIP5KI gamma antibody [MAO-R1]; All lanes : Anti-PIP5KI gamma antibody [MAO-R1] at 1/1000 dilution. Lane 1 : K562 cell lysate. Lane 2 : Human fetal kidney cell lysate. Lane 3 : C6 cell lysate. Lane 4 : Neuro-2a cell lysate. Lane 5 : 293T cell lysate. Lysates/proteins at 10 ug per lane. Predicted band size : 73 kDa.