

Product datasheet for **TA307001**

FOXA2 Rabbit Monoclonal Antibody [Clone ID: EPR4466]

Product data:

| | |
|-------------------------|---|
| Product Type: | Primary Antibodies |
| Clone Name: | EPR4466 |
| Applications: | IHC, WB |
| Recommended Dilution: | WB: 1:1000 - 1:10000; IHC-P: 1:250 - 1:500; ICC: 1:250 - 1:500 |
| Reactivity: | Mouse, Rat, Human |
| Host: | Rabbit |
| Isotype: | IgG |
| Clonality: | Monoclonal |
| Immunogen: | A synthetic peptide corresponding to residues in human HNF 3 Beta was used as an immunogen. |
| Formulation: | pH: 7.40 Preservative: 0.01% Sodium azide Constituents: 50% Glycerol, 0.05% BSA |
| Purification: | Tissue culture supernatant |
| Conjugation: | Unconjugated |
| Storage: | Store at -20°C as received. |
| Stability: | Stable for 12 months from date of receipt. |
| Predicted Protein Size: | 52 kDa |
| Gene Name: | forkhead box A2 |
| Database Link: | NP_710141 Entrez Gene 15376 Mouse Entrez Gene 25099 Rat Entrez Gene 3170 Human Q9Y261 |
| Background: | HNF 3 Beta is a member of the forkhead class of DNA-binding proteins. These hepatocyte nuclear factors are transcriptional activators for liver-specific proteins such as albumin and transthyretin, and they also interact with chromatin. Similar family members in mice have roles in the regulation of metabolism and in the differentiation of the pancreas and liver. HNF 3 Beta has been linked to sporadic cases of maturity-onset diabetes of the young (1). |
| Synonyms: | HNF3B; TCF3B |



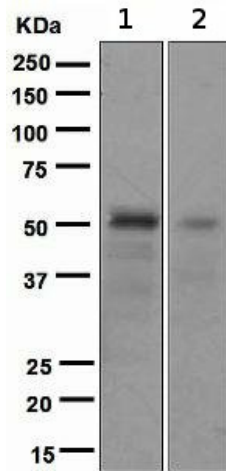
[View online »](#)

Note: Is unsuitable for Flow Cyt or IP.

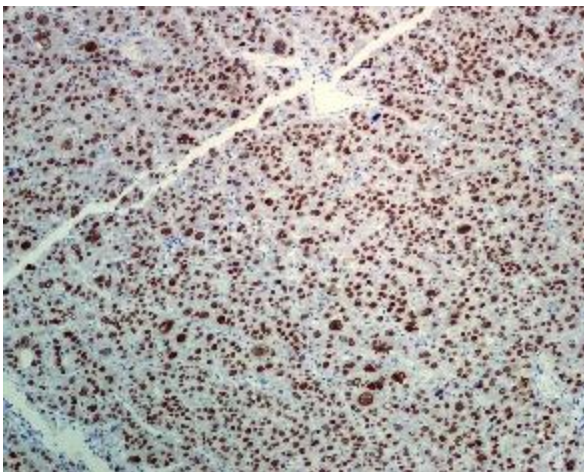
Protein Families: Embryonic stem cells, ES Cell Differentiation/IPS, Induced pluripotent stem cells, Transcription Factors

Protein Pathways: Maturity onset diabetes of the young

Product images:



Western blot - FOXA2 antibody [EPR4466]; All lanes : Anti-FOXA2 antibody [EPR4466] at 1/1000 dilution. Lane 1 : Fetal colon lysate. Lane 2 : HepG2 lysate. Lysates/proteins at 10 ug per lane. Secondary. HRP labelled goat anti-rabbit at 2000. Predicted band size : 52 kDa.



Immunohistochemistry (Formalin/PFA-fixed paraffin-embedded sections) - FOXA2 antibody [EPR4466]; TA307001, at a 1/250 dilution, staining Human FOXA2 in hepatocellular carcinoma, using Immunohistochemistry, Formalin/PFA-fixed paraffin-embedded tissue.