

Product datasheet for **TA306966**

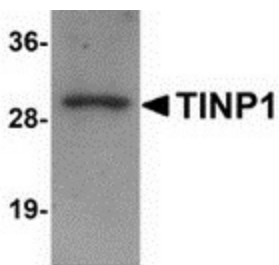
TINP1 (NSA2) Chicken Polyclonal Antibody

Product data:

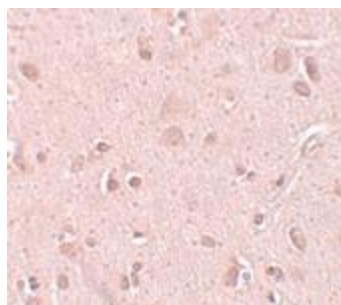
Product Type:	Primary Antibodies
Applications:	IHC, WB
Recommended Dilution:	WB: 1 - 2 ug/mL, ICC: 5 ug/mL
Reactivity:	Human, Mouse, Rat
Host:	Chicken
Isotype:	IgY
Clonality:	Polyclonal
Immunogen:	TINP1 antibody was raised against a 13 amino acid peptide near the carboxy terminus of human TINP1.
Formulation:	PBS containing 0.02% sodium azide.
Concentration:	1ug/ul
Purification:	Affinity chromatography purified via peptide column
Conjugation:	Unconjugated
Storage:	Store at -20°C as received.
Stability:	Stable for 12 months from date of receipt.
Gene Name:	NSA2, ribosome biogenesis homolog
Database Link:	NP_055701 Entrez Gene 59050 Mouse Entrez Gene 171456 Rat Entrez Gene 10412 Human O95478
Background:	TINP1 (TGF-beta inducible nuclear protein 1), also known as NSA2 (Nop seven-associated 2), is a highly conserved nucleolar protein essential for large ribosomal subunit biogenesis. NSA2 is broadly expressed in human tissues and cultured cell lines, and located in the nucleolus of the cell. It is thought to be involved in cell proliferation and cell cycle regulation.
Synonyms:	CDK105; HCL-G1; HCLG1; HUSSY-29; HUSSY29; TINP1



[View online »](#)

Product images:

Western blot analysis of TINP1 in rat brain tissue lysate with TINP1 antibody at (A) 1 and (B) 2 ug/mL.



Immunohistochemistry of TINP1 in human brain tissue with TINP1 antibody at 5 ug/mL.