

Product datasheet for **TA306965**

DCAF12 Chicken Polyclonal Antibody

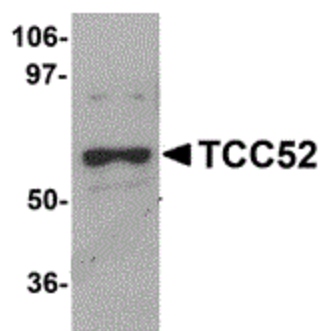
Product data:

Product Type:	Primary Antibodies
Applications:	IF, WB
Recommended Dilution:	WB: 1 ug/mL
Reactivity:	Human, Mouse, Rat
Host:	Chicken
Isotype:	IgY
Clonality:	Polyclonal
Immunogen:	TCC52 antibody was raised against a 15 amino acid peptide near the carboxy terminus of human TCC52.
Formulation:	PBS containing 0.02% sodium azide.
Concentration:	1ug/ul
Purification:	Affinity chromatography purified via peptide column
Conjugation:	Unconjugated
Storage:	Store at -20°C as received.
Stability:	Stable for 12 months from date of receipt.
Gene Name:	DDB1 and CUL4 associated factor 12
Database Link:	NP_056212 Entrez Gene 68970 Mouse Entrez Gene 313296 Rat Entrez Gene 682812 Rat Entrez Gene 25853 Human Q5T6F0
Background:	Cancer-testis (CT) antigens are a type of antigen whose expression is highly restricted, primarily in normal testis, but aberrantly in different tumor types. Their immunogenicity in cancer patients makes them prime targets for immunotherapy of human tumors. One such CT antigen is TCC52, a novel centrosomal protein. TCC52 is a WD repeat-containing protein that interacts with the COP9 signalosome, a macromolecular complex that interacts with cullin-RING E3 ligases and regulates their activity by hydrolyzing cullin-Nedd8 conjugates. The normal biological function of this protein is not known at this time.
Synonyms:	CT102; KIAA1892; TCC52; WDR40A



[View online »](#)

Product images:



Western blot analysis of TCC52 in 293 cell lysate with TCC52 antibody at 1 ug/mL.



Immunocytochemistry of TCC52 in 293 cells with TCC52 antibody at 2.5 ug/mL.