

Product datasheet for **TA306964**

FAM82A1 (RMDN2) Chicken Polyclonal Antibody

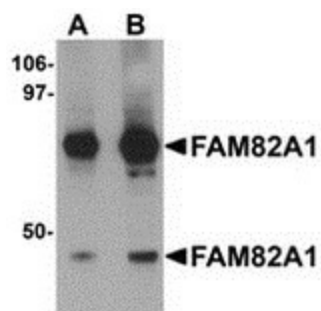
Product data:

| | |
|-----------------------|---|
| Product Type: | Primary Antibodies |
| Applications: | IF, WB |
| Recommended Dilution: | WB: 1 - 2 ug/mL, ICC: 5 ug/mL, IF: 20 ug/mL |
| Reactivity: | Human, Mouse, Rat |
| Host: | Chicken |
| Isotype: | IgY |
| Clonality: | Polyclonal |
| Immunogen: | FAM82A1 antibody was raised against a 16 amino acid peptide near the amino terminus of human FAM82A1. |
| Formulation: | PBS containing 0.02% sodium azide. |
| Concentration: | 1ug/ul |
| Purification: | Affinity chromatography purified via peptide column |
| Conjugation: | Unconjugated |
| Storage: | Store at -20°C as received. |
| Stability: | Stable for 12 months from date of receipt. |
| Gene Name: | regulator of microtubule dynamics 2 |
| Database Link: | NP_653314 Entrez Gene 151393 Human Q96LZ7 |
| Background: | The human protein FAM82A1, also known as regulator of microtubule dynamics 2 (RMD2), was one of three proteins identified as related to a family of microtubule-associated proteins in <i>C. elegans</i> . FAM82A1 contains multiple coiled-coil domains and localize to the spindle microtubules and spindle poles during cell division. During interphase, RMD2 localizes to the cytoplasm with protein observed in the microtubule lattice and perinuclear region. |
| Synonyms: | BLOCK18; FAM82A; FAM82A1; PRO34163; PYST9371; RMD-2; RMD2; RMD4 |

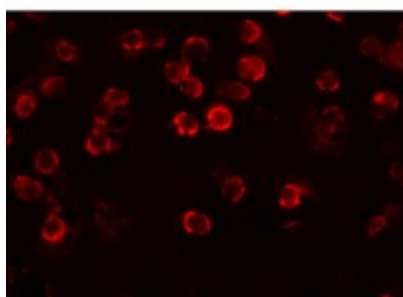


[View online »](#)

Product images:



Western blot analysis of FAM82A1 in K562 cell lysate with FAM82A1 antibody at (A) 1 and (B) 2 ug/mL.



Immunofluorescence of FAM82A1 in K562 cells with FAM82A1 antibody at 20 ug/mL.



Immunocytochemistry of FAM82A1 in Jurkat cells with ENC-2 antibody at 5 ug/mL.