

Product datasheet for **TA306963**

KLHL25 Chicken Polyclonal Antibody

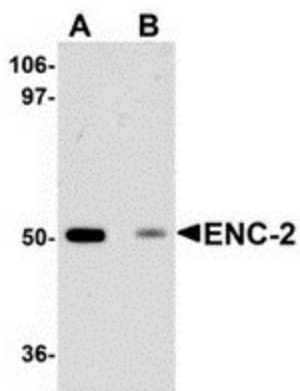
Product data:

Product Type:	Primary Antibodies
Applications:	IF, WB
Recommended Dilution:	WB: 1 ug/mL, ICC: 5 ug/mL, IF: 20 ug/mL
Reactivity:	Human
Host:	Chicken
Isotype:	IgY
Clonality:	Polyclonal
Immunogen:	ENC-2 antibody was raised against a 14 amino acid peptide near the center of human ENC-2.
Formulation:	PBS containing 0.02% sodium azide.
Concentration:	1ug/ul
Purification:	Affinity chromatography purified via peptide column
Conjugation:	Unconjugated
Storage:	Store at -20°C as received.
Stability:	Stable for 12 months from date of receipt.
Gene Name:	kelch like family member 25
Database Link:	AAV51405 Entrez Gene 64410 Human Q9H0H3
Background:	The ectoderm-neural cortex-2 (ENC-2) protein a member of the BTB/PDZ Kelch protein family displaying significant homology to ENC-1, an actin-binding protein involved in neural fate specification during embryogenesis and adipocyte maturation. The exact function of ENC-2 has yet to be determined, but it has been suggested to be involved in the differentiation of neuronal precursor cells into neurons and astrocytes.
Synonyms:	ENC-2; ENC2

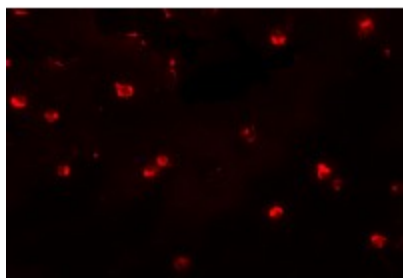


[View online »](#)

Product images:



Western blot analysis of ENC-2 in Jurkat cell lysate with ENC-2 antibody at 1 ug/mL in (A) the absence and (B) the presence of blocking peptide.



Immunofluorescence of ENC-2 in Jurkat cells with ENC-2 antibody at 20 ug/mL.



Immunocytochemistry of ENC-2 in Jurkat cells with ENC-2 antibody at 5 ug/mL.