

Product datasheet for **TA306962**

ENC1 Chicken Polyclonal Antibody

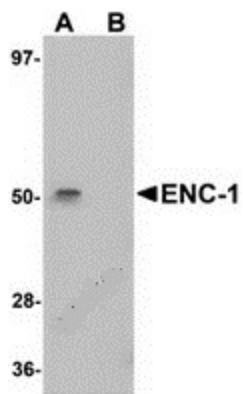
Product data:

Product Type:	Primary Antibodies
Applications:	IF, IHC, WB
Recommended Dilution:	WB: 1 ug/mL, ICC: 5 ug/mL, IF: 20 ug/mL
Reactivity:	Human, Mouse, Rat
Host:	Chicken
Isotype:	IgY
Clonality:	Polyclonal
Immunogen:	ENC-1 antibody was raised against a 13 amino acid peptide near the center of human ENC-1.
Formulation:	PBS containing 0.02% sodium azide.
Concentration:	1ug/ul
Purification:	Affinity chromatography purified via peptide column
Conjugation:	Unconjugated
Storage:	Store at -20°C as received.
Stability:	Stable for 12 months from date of receipt.
Gene Name:	ectodermal-neural cortex 1
Database Link:	NP_003624 Entrez Gene 13803 Mouse Entrez Gene 294674 Rat Entrez Gene 8507 Human O14682
Background:	The ectoderm-neural cortex-1 (ENC-1) protein is an early and highly specific marker of neural induction in vertebrates. It is a kelch family related protein that functions as an actin-binding protein and has been suggested to be involved in the organization of the actin cytoskeleton during neural fate specification and development of the nervous system. ENC-1 has also been shown to be required for adipocyte differentiation when cytoskeletal reorganization and cell shape change from fibroblastic preadipocytes to spherical adipocytes occur.
Synonyms:	CCL28; ENC-1; KLHL35; KLHL37; NRPB; PIG10; TP53110
Protein Families:	Druggable Genome

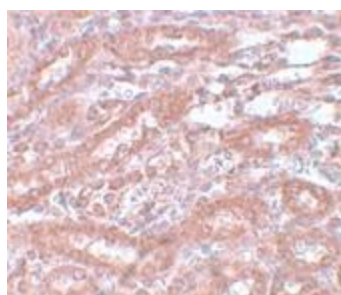


[View online »](#)

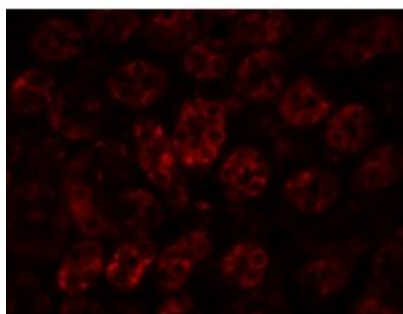
Product images:



Western blot analysis of ENC-1 in mouse kidney muscle tissue lysate with ENC-1 antibody at 1 ug/mL in (A) the absence and (B) the presence of blocking peptide.



Immunohistochemistry of ENC-1 in rat kidney tissue with ENC-1 antibody at 5 ug/mL.



Immunofluorescence of ENC-1 in rat kidney tissue with ENC-1 antibody at 20 ug/mL.