

Product datasheet for **TA306960**

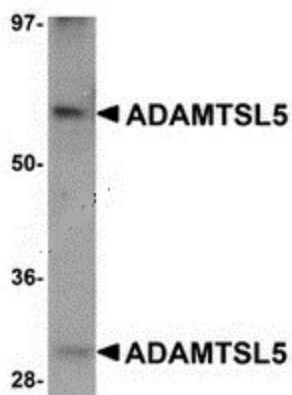
ADAMTSL5 Chicken Polyclonal Antibody

Product data:

Product Type:	Primary Antibodies
Applications:	IF, IHC, WB
Recommended Dilution:	WB: 1 ug/mL, ICC: 5 ug/mL, IF: 20 ug/mL
Reactivity:	Human, Mouse, Rat
Host:	Chicken
Isotype:	IgY
Clonality:	Polyclonal
Immunogen:	ADAMTSL5 antibody was raised against a 17 amino acid peptide near the carboxy terminus of human ADAMTSL5.
Formulation:	PBS containing 0.02% sodium azide.
Concentration:	1ug/ul
Purification:	Affinity chromatography purified via peptide column
Conjugation:	Unconjugated
Storage:	Store at -20°C as received.
Stability:	Stable for 12 months from date of receipt.
Gene Name:	ADAMTS like 5
Database Link:	NP_998769 Entrez Gene 66548 Mouse Entrez Gene 314626 Rat Entrez Gene 339366 Human Q6ZMM2
Background:	ADAMTSL5 belongs to a large superfamily containing 20 ADAMTS proteases and at least eight ADAMTS-like proteins. ADAMTS proteases are secreted enzymes with a conserved organization that includes a metalloprotease domain and an ancillary domain containing one or more thrombospondin type 1 repeats (TSR). The ADAMTS-like subfamily comprises proteins homologous to the ADAMTS ancillary domains but lacking the protease domain and hence lacking catalytic activity. The exact role of ADAMTSL5 is currently unknown, but other ADAMTS-like proteins appear to have regulatory roles in the extracellular matrix.
Synonyms:	THSD6
Protein Families:	Secreted Protein



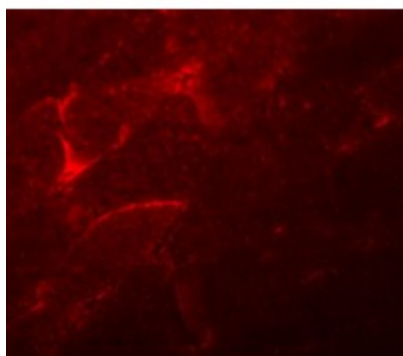
[View online »](#)

Product images:

Western blot analysis of ADAMTSL5 in human skeletal muscle tissue lysate with ADAMTSL5 antibody at 1 ug/mL.



Immunohistochemistry of ADAMTSL5 in mouse skeletal muscle tissue with ADAMTSL5 antibody at 5 ug/mL.



Immunofluorescence of ADAMTSL5 in mouse skeletal muscle tissue with ADAMTSL5 antibody at 20 ug/mL.