

Product datasheet for **TA306956**

ZC3H12D Rabbit Polyclonal Antibody

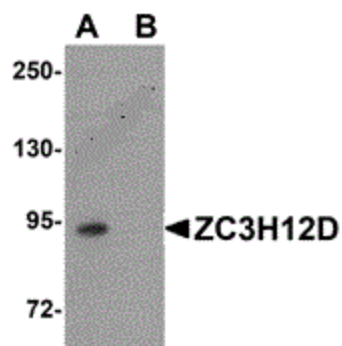
Product data:

Product Type:	Primary Antibodies
Applications:	WB
Recommended Dilution:	WB: 1 ug/mL
Reactivity:	Human
Host:	Rabbit
Isotype:	IgG
Clonality:	Polyclonal
Immunogen:	ZC3H12D antibody was raised against a 17 amino acid peptide near the carboxy terminus of human ZC3H12D.
Formulation:	PBS containing 0.02% sodium azide.
Concentration:	1ug/ul
Purification:	Affinity chromatography purified via peptide column
Conjugation:	Unconjugated
Storage:	Store at -20°C as received.
Stability:	Stable for 12 months from date of receipt.
Gene Name:	zinc finger CCCH-type containing 12D
Database Link:	NP_997243 Entrez Gene 340152 Human A2A288
Background:	ZC3H12D, also known as MCP4, is a member of a family of novel CCCH-zinc finger proteins that includes ZC3H12A, a protein that is thought to be involved in macrophage activation, host immunity and inflammatory diseases. ZC3H12D is highly expressed in spleen, intestine, and colon. Similar to ZC3H12A and ZC3H12C, ZC3H12D expression in murine macrophages is also increased after treatment with lipopolysaccharide (LPS), although not to the same level as ZC3H12A. This pattern of expression was not duplicated in human-derived macrophages, suggesting it also may play a different role in host immunity and inflammatory response.
Synonyms:	C6orf95; dj281H8.1; MCP4; p34; TFL



[View online »](#)

Product images:



Western blot analysis of ZC3H12D in THP-1 cell lysate with ZC3H12D antibody at 1 ug/ml in (A) the absence and (B) the presence of blocking peptide.