

Product datasheet for **TA306951**

WDR74 Rabbit Polyclonal Antibody

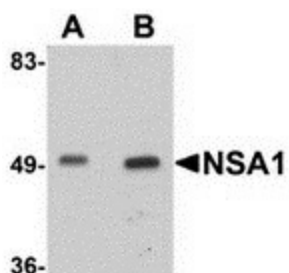
Product data:

Product Type:	Primary Antibodies
Applications:	IF, IHC, WB
Recommended Dilution:	WB: 1 - 2 ug/mL, ICC: 5 ug/mL, IF: 20 ug/mL
Reactivity:	Human, Mouse, Rat
Host:	Rabbit
Isotype:	IgG
Clonality:	Polyclonal
Immunogen:	NSA1 antibody was raised against an 18 amino acid peptide near the carboxy terminus of human NSA1.
Formulation:	PBS containing 0.02% sodium azide.
Concentration:	1ug/ul
Purification:	Affinity chromatography purified via peptide column
Conjugation:	Unconjugated
Storage:	Store at -20°C as received.
Stability:	Stable for 12 months from date of receipt.
Gene Name:	WD repeat domain 74
Database Link:	NP_060563 Entrez Gene 107071 Mouse Entrez Gene 690229 Rat Entrez Gene 54663 Human Q6RFH5
Background:	The yeast nucleolar protein NOP7 is necessary for the maturation of 66S preribosomes and interacts with numerous other proteins. One such protein is an essential, conserved WD repeat protein, NOP seven-associated protein 1 (NSA1), that is also required for the yeast 66S ribosome assembly. NSA1 is also associated with the AAA ATPase Rix7, and release of NSA1 from a novel late nucleolar pre-60S requires the Rix7 function. NSA1 has also been found upregulated in mammalian cancer cells, suggesting it may also play a role in cell proliferation.
Synonyms:	FLJ10439; FLJ21730

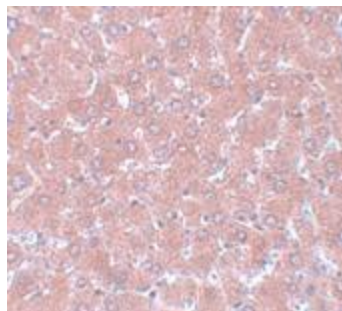


[View online »](#)

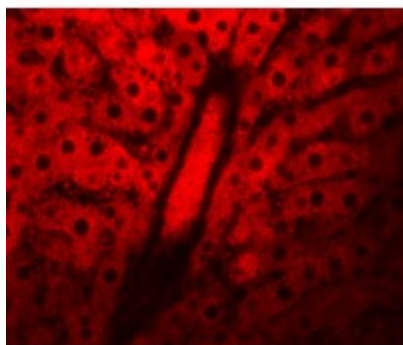
Product images:



Western blot analysis of NSA1 in mouse liver tissue lysate with NSA1 antibody at (A) 1 and (B) 2 ug/mL.



Immunohistochemistry of NSA1 in rat liver tissue with NSA1 antibody at 5 ug/mL.



Immunofluorescence of NSA1 in rat liver tissue with NSA1 antibody at 20 ug/mL.