

Product datasheet for **TA306948**

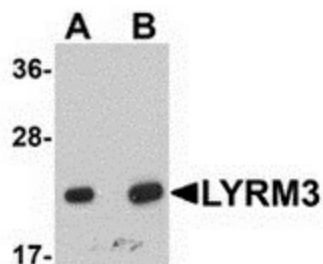
NDUFB9 Rabbit Polyclonal Antibody

Product data:

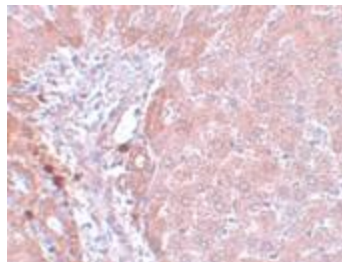
Product Type:	Primary Antibodies
Applications:	IF, IHC, WB
Recommended Dilution:	WB: 1 - 2 ug/mL, ICC: 5 ug/mL, IF: 20 ug/mL
Reactivity:	Human, Mouse, Rat
Host:	Rabbit
Isotype:	IgG
Clonality:	Polyclonal
Immunogen:	LYRM3 antibody was raised against a 17 amino acid peptide near the carboxy terminus of human LYRM3.
Formulation:	PBS containing 0.02% sodium azide.
Concentration:	1ug/ul
Purification:	Affinity chromatography purified via peptide column
Conjugation:	Unconjugated
Storage:	Store at -20°C as received.
Stability:	Stable for 12 months from date of receipt.
Gene Name:	NADH:ubiquinone oxidoreductase subunit B9
Database Link:	NP_004996 Entrez Gene 66218 Mouse Entrez Gene 299954 Rat Entrez Gene 4715 Human Q9Y6M9
Background:	LYRM3, also known as NADH dehydrogenase (ubiquinone) 1 beta subcomplex 9 (NDUFB9), is a ubiquitously expressed LYR-motif containing protein. It has been suggested to be a candidate gene for the branchio-oto-renal (BOR) syndrome, which is characterized by branchial and renal abnormalities and heredity deafness disorders. Other than its LYR-motif, LYRM3 appears to have no functional or structural relationship to either LYRM1 or LYRM2.
Synonyms:	B22; CI-B22; LYRM3; UQOR22
Protein Pathways:	Alzheimer's disease, Huntington's disease, Metabolic pathways, Oxidative phosphorylation, Parkinson's disease



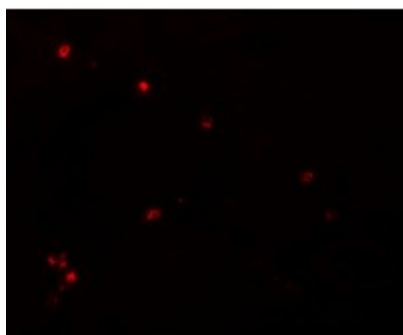
[View online »](#)

Product images:

Western blot analysis of LYRM3 in human liver tissue lysate with LYRM3 antibody at (A) 1 and (B) 2 ug/mL.



Immunohistochemistry of LYRM3 in rat liver tissue with LYRM3 antibody at 5 ug/mL.



Immunofluorescence of LYRM3 in rat liver tissue with LYRM3 antibody at 20 ug/mL.