

## Product datasheet for **TA306947**

### LYRM2 Rabbit Polyclonal Antibody

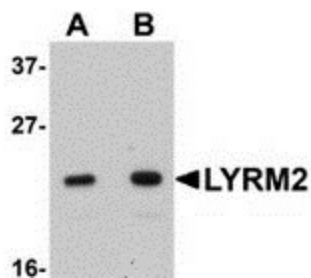
#### Product data:

Product Type:	Primary Antibodies
Applications:	IF, WB
Recommended Dilution:	WB: 1 - 2 ug/mL, ICC: 20 ug/mL, IF: 20 ug/mL
Reactivity:	Human, Mouse, Rat
Host:	Rabbit
Isotype:	IgG
Clonality:	Polyclonal
Immunogen:	LYRM2 antibody was raised against a 16 amino acid peptide near the carboxy terminus of human LYRM2.
Formulation:	PBS containing 0.02% sodium azide.
Purification:	Affinity chromatography purified via peptide column
Conjugation:	Unconjugated
Storage:	Store at -20°C as received.
Stability:	Stable for 12 months from date of receipt.
Gene Name:	LYR motif containing 2
Database Link:	<a href="#">NP_065199</a> <a href="#">Entrez Gene 108755</a> <a href="#">MouseEntrez Gene 690354</a> <a href="#">RatEntrez Gene 57226</a> <a href="#">Human Q9NU23</a>
Background:	The Lyr motif found in the LYR-motif containing protein family is similar to that found in the <i>saccharomyces cerevisiae</i> protein ISD11, an iron-sulfur protein in the mitochondria that is thought to play a role in iron homeostasis. No known function has been assigned to LYRM2, although LYRM1 is thought to be involved in preadipocyte progression and LYRM3 has been suggested to be a candidate gene for the branchio-oto-renal (BOR) syndrome.
Synonyms:	DJ12208.2

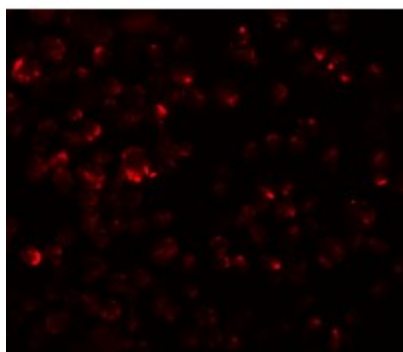


[View online »](#)

## Product images:



Western blot analysis of LYRM2 in A549 cell lysate with LYRM2 antibody at (A) 1 and (B) 2 ug/mL.



Immunofluorescence of LYRM2 in A549 cells with LYRM2 antibody at 20 ug/mL.



Immunocytochemistry of LYRM2 in A549 cells with LYRM2 antibody at 20 ug/mL.