

## Product datasheet for **TA306946**

### LYRM1 Rabbit Polyclonal Antibody

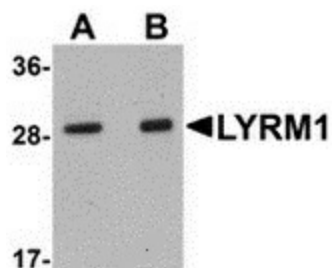
#### Product data:

Product Type:	Primary Antibodies
Applications:	IF, IHC, WB
Recommended Dilution:	WB: 1 - 2 ug/mL, ICC: 5 ug/mL, IF: 20 ug/mL
Reactivity:	Human, Mouse, Rat
Host:	Rabbit
Isotype:	IgG
Clonality:	Polyclonal
Immunogen:	LYRM1 antibody was raised against a 17 amino acid peptide near the center of human LYRM1.
Formulation:	PBS containing 0.02% sodium azide.
Concentration:	1ug/ul
Purification:	Affinity chromatography purified via peptide column
Conjugation:	Unconjugated
Storage:	Store at -20°C as received.
Stability:	Stable for 12 months from date of receipt.
Gene Name:	LYR motif containing 1
Database Link:	<a href="#">NP_001121773</a> <a href="#">Entrez Gene 73919 Mouse</a> <a href="#">Entrez Gene 365361 Rat</a> <a href="#">Entrez Gene 57149 Human</a> <a href="#">O43325</a>
Background:	LYRM1 was one of many genes identified through a suppression subtractive hybridization comparing their expression in omental adipose tissue of obese patients compared to non-obese individuals. Further study confirms that both mRNA and protein levels of LYRM1 are higher in obese individuals. LYRM1 is widely expressed, with highest levels occurring in adipose and liver tissues. It is thought that LYRM1 promotes preadipocyte proliferation and can inhibit apoptosis of preadipocytes. Ectopic LYRM1 expression did not significantly affect adipogenesis, suggesting that LYRM1 can influence adipose tissue homeostasis by modulating the size of the preadipocyte pool.
Synonyms:	A211C6.1



[View online »](#)

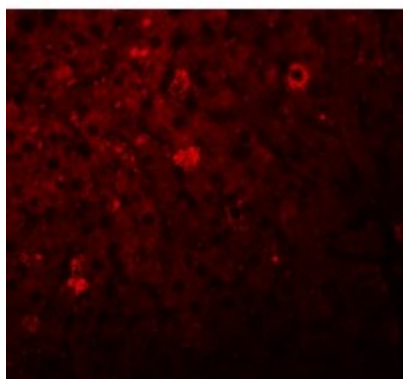
## Product images:



Western blot analysis of LYRM1 in human liver tissue lysate with LYRM1 antibody at (A) 1 and (B) 2 ug/mL.



Immunohistochemistry of LYRM1 in rat liver tissue with LYRM1 antibody at 5 ug/mL.



Immunofluorescence of LYRM1 in rat liver tissue with LYRM1 antibody at 20 ug/mL.