

## Product datasheet for **TA306944**

### EFHD1 Rabbit Polyclonal Antibody

#### Product data:

Product Type:	Primary Antibodies
Applications:	IF, WB
Recommended Dilution:	WB: 2 - 4 ug/mL, IF: 20 ug/mL
Reactivity:	Human, Mouse, Rat
Host:	Rabbit
Isotype:	IgG
Clonality:	Polyclonal
Immunogen:	EFHD1 antibody was raised against a 14 amino acid peptide near the amino terminus of human EFHD1.
Formulation:	PBS containing 0.02% sodium azide.
Concentration:	1ug/ul
Purification:	Affinity chromatography purified via peptide column
Conjugation:	Unconjugated
Storage:	Store at -20°C as received.
Stability:	Stable for 12 months from date of receipt.
Gene Name:	EF-hand domain family member D1
Database Link:	<a href="#">NP_079478</a>

[Entrez Gene 98363 Mouse](#)[Entrez Gene 501181 Rat](#)[Entrez Gene 80303 Human](#)  
[Q9BUPO](#)

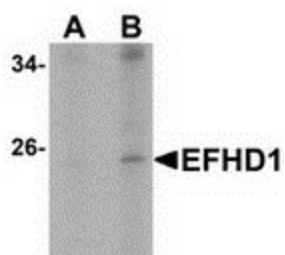
**Background:** EFHD1, also known as Swiprosin-2 or SWS2, is an EF-hand and coiled-coil-containing adaptor protein identified in a subtractive hybridization study using a neuronal cell line established from the cerebellum of an adult p53-null mouse, however further study indicated no difference in normal mice. Its mRNA is widely expressed, with its expression in brain undetectable at embryonic stages, with increasing levels from postnatal to adult development. In situ hybridization showed expression in neurons but not white matter of the cerebellum and cerebrum. EFHD1 is also highly expressed in testes, ovary, and the collecting ducts of the kidney, suggesting that in non-neuronal cells, EFHD1 may be involved in gametogenesis and water-reabsorption.



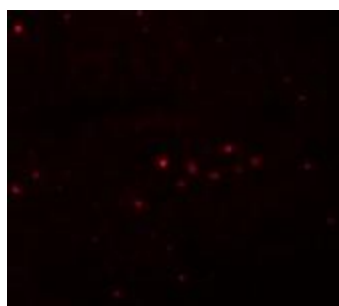
[View online »](#)

Synonyms: MST133; MSTP133; PP3051; SWS2

### Product images:



Western blot analysis of EFHD1 in human spleen tissue lysate with EFHD1 antibody at (A) 2 and (B) 4 ug/mL.



Immunofluorescence of EFHD1 in rat spleen tissue with EFHD1 antibody at 5 ug/mL.