

## Product datasheet for **TA306943**

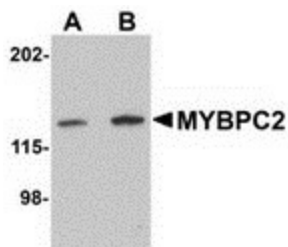
### MYBPC2 Rabbit Polyclonal Antibody

#### Product data:

Product Type:	Primary Antibodies
Applications:	IHC, WB
Recommended Dilution:	WB: 1 - 2 ug/mL, ICC: 5 ug/mL
Reactivity:	Human, Mouse
Host:	Rabbit
Isotype:	IgG
Clonality:	Polyclonal
Immunogen:	MYBPC2 antibody was raised against a 15 amino acid peptide near the carboxy terminus of human MYBPC2.
Formulation:	PBS containing 0.02% sodium azide.
Purification:	Affinity chromatography purified via peptide column
Conjugation:	Unconjugated
Storage:	Store at -20°C as received.
Stability:	Stable for 12 months from date of receipt.
Gene Name:	myosin binding protein C, fast type
Database Link:	<a href="#">NP_004524</a> <a href="#">Entrez Gene 233199 Mouse</a> <a href="#">Entrez Gene 4606 Human</a> <a href="#">Q14324</a>
Background:	Myosin binding protein C (MYBPC) is a component of the thick filament of striated muscle, with the fast-type isoform designated MYBPC2. Both the fast-type and slow-type MYBPC protein contains seven immunoglobulin C2 motifs and three fibronectin type-III repeats. MYBPC2 is typically required for strong contractions and functions under anaerobic conditions. It is more similar to the cardiac isoform (MYBPC3) than to the slow-type isoform (MYBPC1) in terms of pCa50-indexed force development, length-independent cooperativity and length dependent activation. It has been suggested that in cardiac and fast muscle MYBPC2 contributes to an internal load, possibly by binding to actin via its N-terminal region.
Synonyms:	MYBPC; MYBPCF



[View online »](#)

**Product images:**


Western blot analysis of MYBPC2 in mouse skeletal muscle tissue lysate with MYBPC2 antibody at (A) 1 and (B) 2 ug/ml.

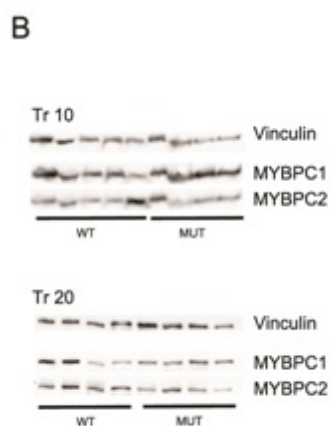


Figure from citation: Western blot analysis of Mybpc2 protein level by using anti-Mybpc2 antibody in triceps muscle (Tr) of 10 and 20 months-old hemizygous male mice (MUT) and wild-type mice (WT). Dilution: 1:1000 [View Citation](#)



Immunohistochemistry of MYBPC2 in mouse skeletal muscle tissue with MYBPC2 antibody at 5 ug/mL.