

## Product datasheet for **TA306942**

### SLC37A2 Rabbit Polyclonal Antibody

#### Product data:

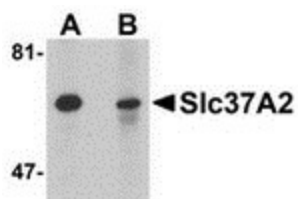
Product Type:	Primary Antibodies
Applications:	IF, IHC, WB
Recommended Dilution:	WB: 1 ug/mL, ICC: 5 ug/mL, IF: 20 ug/mL
Reactivity:	Human, Mouse, Rat
Host:	Rabbit
Isotype:	IgG
Clonality:	Polyclonal
Immunogen:	Slc37A2 antibody was raised against a 15 amino acid peptide near the center of human Slc37A2.
Formulation:	PBS containing 0.02% sodium azide.
Concentration:	1ug/ul
Purification:	Affinity chromatography purified via peptide column
Conjugation:	Unconjugated
Storage:	Store at -20°C as received.
Stability:	Stable for 12 months from date of receipt.
Gene Name:	solute carrier family 37 member 2
Database Link:	<a href="#">NP_938018</a> <a href="#">Entrez Gene 219855 Human</a> <a href="#">Q8TED4</a>
Background:	The Slc37 gene family consists of four members which have 10-12 predicted transmembrane domains and belong to the sugar-phosphate transporter superfamily. Recent experiments have demonstrated that Slc37A2 is a macrophage-specific gene selectively expressed in obese white adipose tissue. Its transcript is also expressed in spleen and thymus and the cell lines RAW264.7 and THP-1. Compared to wild-type mice, Slc37A2 mRNA is expressed at nine-fold higher levels in abdominal epididymal fat deposits of ob/ob mice, suggesting that it may be required to limit the contribution of macrophages to the inflammatory state present in obesity. Slc37A2 protein is post-translationally modified with the addition of N-linked glycans and migrates as a heterogeneous species of 50-75kDa.



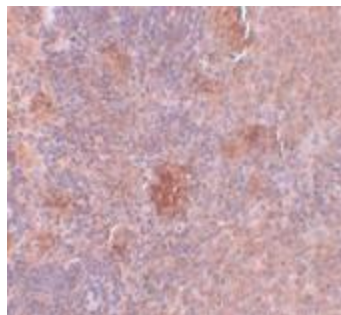
[View online »](#)

Synonyms: pp11662

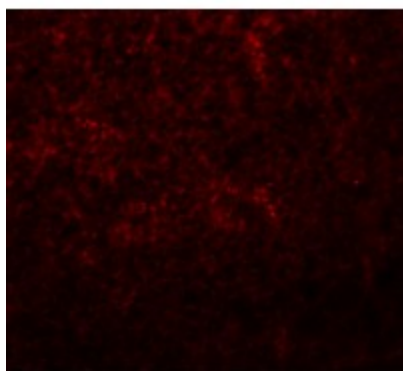
### Product images:



Western blot analysis of Slc37A2 in mouse spleen tissue lysate with Slc37A2 antibody at 1 ug/mL in the (A) absence and (B) presence of blocking peptide.



Immunohistochemistry of Slc37A2 in rat spleen tissue with Slc37A2 antibody at 5 ug/mL.



Immunofluorescence of Slc37A2 in rat spleen tissue with Slc37A2 antibody at 20 ug/mL.