

Product datasheet for **TA306939**

ELOVL7 Rabbit Polyclonal Antibody

Product data:

Product Type:	Primary Antibodies
Applications:	IF, IHC, WB
Recommended Dilution:	WB: 1 ug/mL, ICC: 5 ug/mL, IF: 20 ug/mL
Reactivity:	Human, Mouse
Host:	Rabbit
Isotype:	IgG
Clonality:	Polyclonal
Immunogen:	ELOVL7 antibody was raised against a 15 amino acid peptide near the amino terminus of human ELOVL7.
Formulation:	PBS containing 0.02% sodium azide.
Concentration:	1 mg/ml
Purification:	Affinity chromatography purified via peptide column
Conjugation:	Unconjugated
Storage:	Store at -20°C as received.
Stability:	Stable for 12 months from date of receipt.
Gene Name:	ELOVL fatty acid elongase 7
Database Link:	NP_001098028 Entrez Gene 74559 Mouse Entrez Gene 79993 Human A1L3X0



[View online »](#)

Background:

Lipogenesis is a key event in the energy storage system and is controlled by the transcription factor sterol regulatory element-binding protein (SREBP)-1. Elongation of very long chain fatty acids protein 7 (ELOVL7) is a member of fatty acyl-CoA elongase gene family that elongates saturated very-long-chain fatty acids (SVLFA, C20:0-) and has been suggested to be involved in prostate cancer growth through saturated long-chain fatty acid metabolism. The metabolic pathways of long-chain fatty acids play an important role in the maintenance of membrane lipid composition and the generation of cell signaling precursor molecules such as eicosanoids and sphingosine-1 phosphate. Overexpression of ELOVL7 results in lipid accumulation in differentiated adipocytes; its expression is regulated by the microRNA miR-219.

Synonyms:

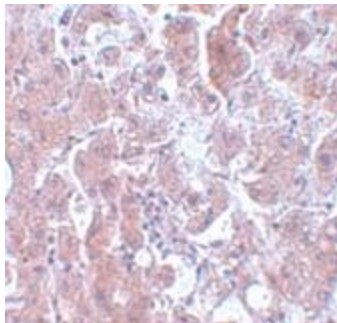
FLJ23563

Protein Families:

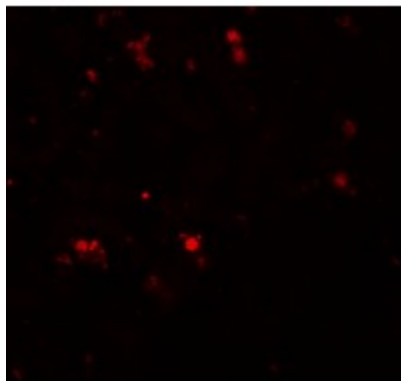
Transmembrane

Product images:

Western blot analysis of ELOVL7 in human liver tissue lysate with ELOVL7 antibody at 1 ug/mL.



Immunohistochemistry of ELOVL7 in human liver tissue with ELOVL7 antibody at 5 ug/mL.



Immunofluorescence of ELOVL7 in human liver tissue with ELOVL7 antibody at 20 ug/mL.