

## Product datasheet for **TA306937**

### DCLK3 Rabbit Polyclonal Antibody

#### Product data:

Product Type:	Primary Antibodies
Applications:	IF, WB
Recommended Dilution:	WB: 1 - 2 ug/mL, IF: 20 ug/mL
Reactivity:	Human, Mouse
Host:	Rabbit
Isotype:	IgG
Clonality:	Polyclonal
Immunogen:	DCLK3 antibody was raised against a 14 amino acid peptide near the amino terminus of human DCLK3.
Formulation:	PBS containing 0.02% sodium azide.
Concentration:	1ug/ul
Purification:	Affinity chromatography purified via peptide column
Conjugation:	Unconjugated
Storage:	Store at -20°C as received.
Stability:	Stable for 12 months from date of receipt.
Gene Name:	doublecortin like kinase 3
Database Link:	<a href="#">NP_208382</a> <a href="#">Entrez Gene 245038 Mouse</a> <a href="#">Entrez Gene 85443 Human</a> <a href="#">Q9C098</a>
Background:	DCLK3 is one of three doublecortin-like kinases similar to the Ca <sup>2+</sup> /calmodulin-dependent protein kinase (CaMK) family. DCLK3 mRNA, like that of the homologous DCLK1 and DCLK3, is highly expressed in adult brain, but only DCLK3 transcripts are present in liver and kidney, suggesting that DCLK3 may play other roles than in cortical development. The DCLK proteins are homologous to Doublecortin (DCX), a protein that is mutated in X-linked human lissencephaly. In mouse models where the DCX gene has been disrupted, DCLK1 expression increases slightly and appears to compensate for the loss of DCX, as mice mutant for both DCX and DCLK1 show a severe phenotype including perinatal lethality, disorganized neocortical layering, and profound hippocampal cytoarchitectural disorganization.

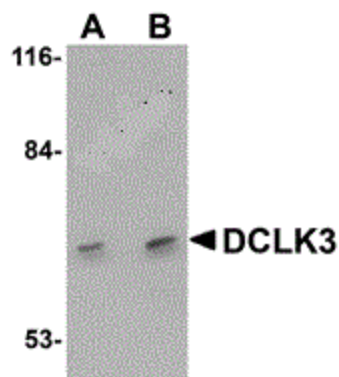


[View online »](#)

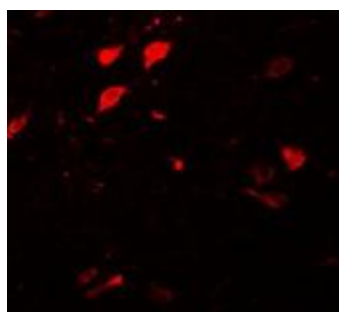
Synonyms: CLR; DCAMKL3; DCDC3C; DCK3

Protein Families: Druggable Genome, Protein Kinase

### Product images:



Western blot analysis of DCLK3 in K562 cell lysate with DCLK3 antibody at (A) 1 and (B) 2 ug/mL.



Immunofluorescence of DLCK3 in human brain tissue with DLCK3 antibody at 20 ug/mL.