

Product datasheet for **TA306936**

DCAMKL2 (DCLK2) Rabbit Polyclonal Antibody

Product data:

Product Type:	Primary Antibodies
Applications:	IHC, WB
Recommended Dilution:	WB: 1 - 2 ug/mL, ICC: 5 ug/mL
Reactivity:	Human, Mouse, Rat
Host:	Rabbit
Isotype:	IgG
Clonality:	Polyclonal
Immunogen:	DCLK2 antibody was raised against a 14 amino acid peptide near the carboxy terminus of human DCLK2.
Formulation:	PBS containing 0.02% sodium azide.
Concentration:	1ug/ul
Purification:	Affinity chromatography purified via peptide column
Conjugation:	Unconjugated
Storage:	Store at -20°C as received.
Stability:	Stable for 12 months from date of receipt.
Gene Name:	doublecortin like kinase 2
Database Link:	NP_001035350 Entrez Gene 70762 Mouse Entrez Gene 310698 Rat Entrez Gene 166614 Human Q8N568



[View online »](#)

Background:

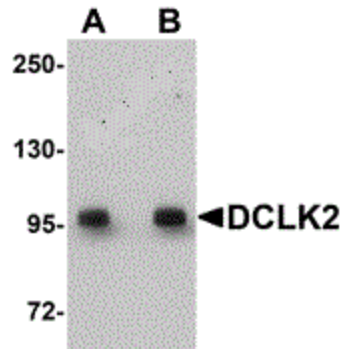
DCLK2 is one of three doublecortin-like kinases similar to the Ca²⁺/calmodulin-dependent protein kinase (CaMK) family. DCLK2 mRNA, like that of the homologous DCLK1 and DCLK3, is highly expressed in adult brain, but only DCLK1 and DCLK2 transcripts are present in human fetal brain and the developing mouse embryo, suggesting that DCLK1 and DCLK2 may play roles in cortical development. The DCLK proteins are homologous to Doublecortin (DCX), a protein that is mutated in X-linked human lissencephaly. In mouse models where the DCX gene has been disrupted, DCLK1 expression increases slightly and appears to compensate for the loss of DCX, as mice mutant for both DCX and DCLK1 show a severe phenotype including perinatal lethality, disorganized neocortical layering, and profound hippocampal cytoarchitectural disorganization. Unlike DCLK1, DCLK2 expression does not change in DCX-null mice.

Synonyms:

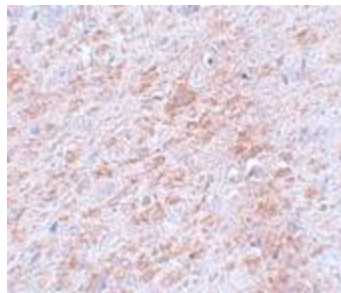
CL2; CLICK-II; CLICK2; CLIK2; DCAMKL2; DCDC3; DCDC3B; DCK2

Protein Families:

Druggable Genome, Protein Kinase

Product images:

Western blot analysis of DCLK2 in rat brain tissue lysate with DCLK2 antibody at (A) 1 and (B) 2 ug/mL.



Immunohistochemistry of DCLK2 in rat brain tissue with DCLK2 antibody at 5 ug/mL.