

Product datasheet for **TA306935**

DCAMKL1 (DCLK1) Rabbit Polyclonal Antibody

Product data:

Product Type:	Primary Antibodies
Applications:	IF, IHC, WB
Recommended Dilution:	WB: 0.5 - 1 ug/mL, ICC: 2.5 ug/mL
Reactivity:	Human, Mouse, Rat
Host:	Rabbit
Isotype:	IgG
Clonality:	Polyclonal
Immunogen:	DCLK1 antibody was raised against a 14 amino acid synthetic peptide near the amino terminus of human DCLK1. The immunogen is located within the last 50 amino acids of DCLK1.
Formulation:	PBS containing 0.02% sodium azide.
Concentration:	1ug/ul
Purification:	Affinity chromatography purified via peptide column
Conjugation:	Unconjugated
Storage:	Antibody can be stored at 4°C up to one year. Antibodies should not be exposed to prolonged high temperatures.
Stability:	Shipped at 4°C (stable for 3-5 days at RT).
Gene Name:	doublecortin like kinase 1
Database Link:	NP_004725 Entrez Gene 13175 Mouse Entrez Gene 83825 Rat Entrez Gene 9201 Human O15075



[View online »](#)

Background:

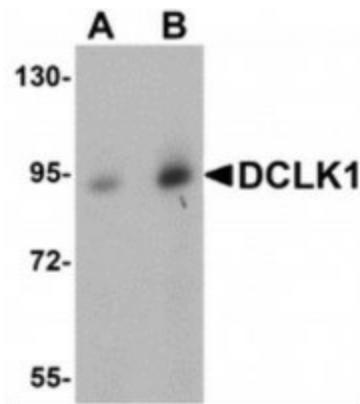
DCLK1 is one of three doublecortin-like kinases similar to the Ca²⁺/calmodulin-dependent protein kinase (CaMK) family. DCLK1 mRNA, like that of the homologous DCLK2 and DCLK3, is highly expressed in adult brain, but only DCLK1 and DCLK2 transcripts are present in human fetal brain and the developing mouse embryo, suggesting that DCLK1 and DCLK2 may play roles in cortical development. The DCLK proteins are homologous to Doublecortin (DCX), a gene that is mutated in X-linked human lissencephaly. In mouse models where the DCX gene has been disrupted, DCLK1 expression increases slightly and appears to compensate for the loss of DCX, as mice mutant for both DCX and DCLK1 show a severe phenotype including perinatal lethality, disorganized neocortical layering, and profound hippocampal cytoarchitectural disorganization. Unlike DCLK1, DCLK2 expression does not change in DCX-null mice.

Synonyms:

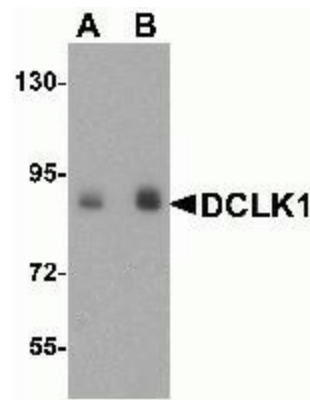
CL1; CLICK1; DCAMKL1; DCDC3A; DCLK

Protein Families:

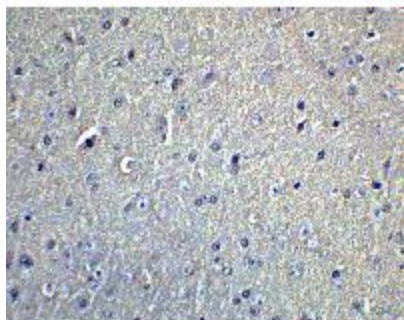
Druggable Genome, Protein Kinase

Product images:

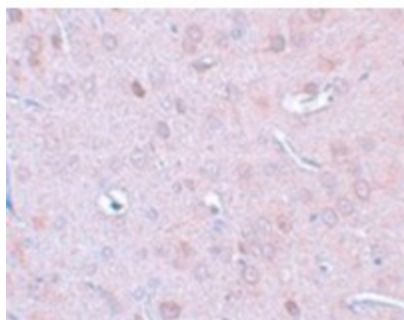
Western blot analysis of DCLK1 in human brain tissue lysate with DCLK1 antibody at (A) 0.5 and (B) 1ug/ml.



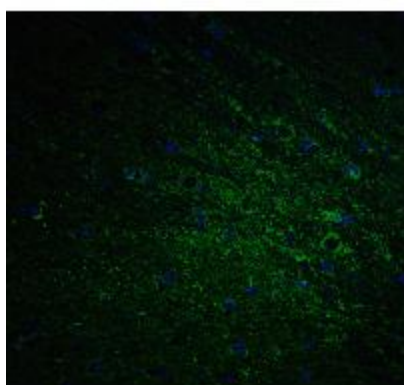
Western blot analysis of DCLK1 expression in rat brain tissue lysate with DCLK1 antibody at (A) 1 and (B) 2ug/ml.



Immunohistochemistry of DCLK1 in mouse brain tissue with DCLK1 Antibody at 5ug/ml.



Immunohistochemistry of DCLK1 in rat brain tissue with DCLK1 antibody at 2.5ug/ml.



Immunofluorescence of DCLK1 in mouse brain tissue with DCLK1 Antibody at 20ug/ml.