

Product datasheet for **TA306934**

BCAS4 Rabbit Polyclonal Antibody

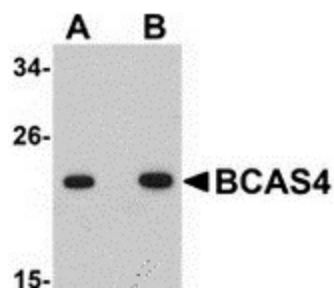
Product data:

Product Type:	Primary Antibodies
Applications:	IF, IHC, WB
Recommended Dilution:	WB: 1 - 2 ug/mL, ICC: 5 ug/mL, IF: 20 ug/mL
Reactivity:	Human, Mouse
Host:	Rabbit
Isotype:	IgG
Clonality:	Polyclonal
Immunogen:	BCAS4 antibody was raised against a 14 amino acid peptide near the amino terminus of human BCAS4.
Formulation:	PBS containing 0.02% sodium azide.
Concentration:	1ug/ul
Purification:	Affinity chromatography purified via peptide column
Conjugation:	Unconjugated
Storage:	Store at -20°C as received.
Stability:	Stable for 12 months from date of receipt.
Gene Name:	breast carcinoma amplified sequence 4
Database Link:	NP_001010974 Entrez Gene 55653 Human Q8TDM0
Background:	The Breast carcinoma amplified sequence (BCAS4) gene is localized to 20q13, a region that is often amplified in breast cancers. It was isolated by the cloning of a highly overexpressed 1.3 kb transcript from the fusion of the last two exons of the BCAS3 and BCAS4 genes. This BCAS3-BCAS4 fusion transcript is only found in the MCF7 cell line, but the BCAS4 gene is also overexpressed in nine of thirteen breast cancer cell lines. The role of BCAS4 is unknown but its mRNA is highly expressed in thymus, spleen, kidney, brain, and placenta, suggesting BCAS4 plays other roles in multiple tissues.
Synonyms:	CNOL

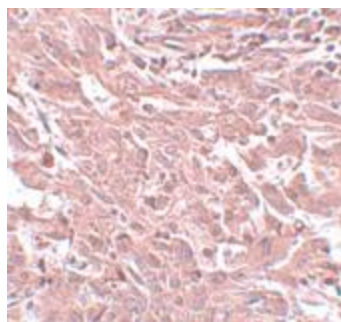


[View online »](#)

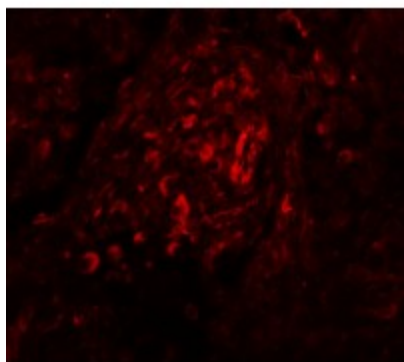
Product images:



Western blot analysis of BCAS4 in 3T3 cell lysate with BCAS4 antibody at (A) 1 and (B) 2 ug/mL.



Immunohistochemistry of BCAS4 in human breast carcinoma with BCAS4 antibody at 5 ug/mL.



Immunofluorescence of BCAS4 in human breast carcinoma tissue with BCAS4 antibody at 20 ug/mL.