

## Product datasheet for **TA306933**

### BCAS3 Rabbit Polyclonal Antibody

#### Product data:

Product Type:	Primary Antibodies
Applications:	IF, IHC, WB
Recommended Dilution:	WB: 0.5 - 1 ug/mL, ICC: 5 ug/mL, IF: 20 ug/mL
Reactivity:	Human, Mouse, Rat
Host:	Rabbit
Isotype:	IgG
Clonality:	Polyclonal
Immunogen:	BCAS3 antibody was raised against an 18 amino acid peptide near the amino terminus of human BCAS3.
Formulation:	PBS containing 0.02% sodium azide.
Concentration:	1ug/ul
Purification:	Affinity chromatography purified via peptide column
Conjugation:	Unconjugated
Storage:	Store at -20°C as received.
Stability:	Stable for 12 months from date of receipt.
Gene Name:	breast carcinoma amplified sequence 3
Database Link:	<a href="#">NP_001092902</a> <a href="#">Entrez Gene 192197 Mouse</a> <a href="#">Entrez Gene 363662 Rat</a> <a href="#">Entrez Gene 54828 Human</a> <a href="#">Q9H6U6</a>

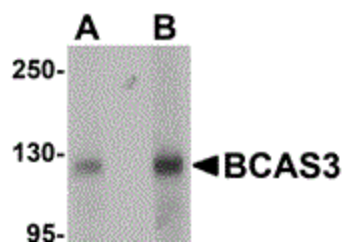
**Background:** The Breast carcinoma amplified sequence (BCAS3) gene is localized to 17q23, a region that is often amplified in breast cancers. Copy number gains at this region have also been reported in other tumors such as brain, lung, liver, testis and bladder. BCAS3 is thought to be an estrogen receptor (ER)-a co-activator that acts through PELP1, another ER-a that in turn activates BCAS3 expression. This may set up a positive feedback loop leading to ER-a signal amplification in the cell which may play a significant role in breast cancer. BCAS3 expression has also been observed in embryonic stem cells and vascular precursors, suggesting that it may also play a role in embryogenesis and tumor angiogenesis.

**Synonyms:** GAOB1; MAAB

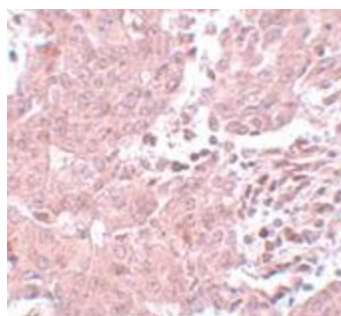


[View online »](#)

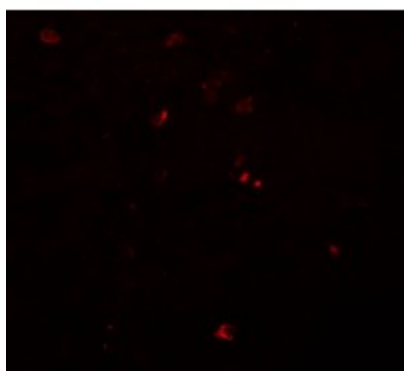
## Product images:



Western blot analysis of BCAS3 in rat brain tissue lysate with BCAS3 antibody at (A) 0.5 and (B) 1 ug/mL.



Immunohistochemistry of BCAS3 in human breast carcinoma with BCAS3 antibody at 5 ug/mL.



Immunofluorescence of BCAS3 in human breast carcinoma tissue with BCAS3 antibody at 20 ug/mL.