

Product datasheet for **TA306929**

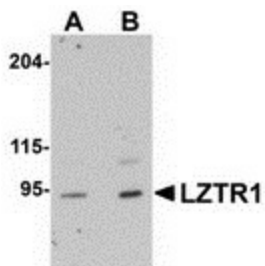
LZTR1 Rabbit Polyclonal Antibody

Product data:

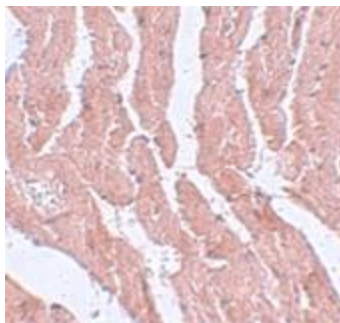
Product Type:	Primary Antibodies
Applications:	IHC, WB
Recommended Dilution:	WB: 1 - 2 ug/mL, ICC: 5 ug/mL
Reactivity:	Human, Mouse, Rat
Host:	Rabbit
Isotype:	IgG
Clonality:	Polyclonal
Immunogen:	LZTR1 antibody was raised against a 14 amino acid peptide near the amino terminus of human LZTR1.
Formulation:	PBS containing 0.02% sodium azide.
Concentration:	1ug/ul
Purification:	Affinity chromatography purified via peptide column
Conjugation:	Unconjugated
Storage:	Store at -20°C as received.
Stability:	Stable for 12 months from date of receipt.
Gene Name:	leucine-zipper-like transcription regulator 1
Database Link:	CAI86451 Entrez Gene 8216 Human Q8N653
Background:	LZTR1, a member of the BTB-kelch superfamily, was initially described as a putative transcriptional regulator based on weak homology to members of the basic leucine zipper-like family, the encoded protein subsequently has been shown to localize exclusively to the Golgi network where it may help stabilize the Golgi complex. Deletion of this gene may be associated with DiGeorge syndrome, a developmental field defect involving the third and fourth pharyngeal pouches, causing the absence of thymus and parathyroid glands, congenital cardiac abnormalities and facial dysmorphism. LZTR1 is tyrosine phosphorylated and subsequently degraded upon induction of apoptosis.
Synonyms:	BTBD29; LZTR-1; NS10; SWNTS2



[View online »](#)

Product images:

Western blot analysis of LZTR1 in human heart tissue lysate with LZTR1 antibody at (A) 1 and (B) 2 ug/mL.



Immunohistochemistry of LZTR1 in mouse heart tissue with LZTR1 antibody at 5 ug/mL.