

## Product datasheet for **TA306924**

### Lin28 (LIN28A) Rabbit Polyclonal Antibody

#### Product data:

Product Type:	Primary Antibodies
Applications:	IF, IHC, WB
Recommended Dilution:	WB: 1 - 2 ug/mL, ICC: 5 ug/mL, IF: 20 ug/mL
Reactivity:	Human
Host:	Rabbit
Isotype:	IgG
Clonality:	Polyclonal
Immunogen:	Lin28 antibody was raised against a 15 amino acid peptide near the carboxy terminus of human Lin28.
Formulation:	PBS containing 0.02% sodium azide.
Concentration:	1ug/ul
Purification:	Affinity chromatography purified via peptide column
Conjugation:	Unconjugated
Storage:	Antibody can be stored at 4°C up to one year. Antibodies should not be exposed to prolonged high temperatures.
Stability:	Stable for 12 months from date of receipt.
Gene Name:	lin-28 homolog A
Database Link:	<a href="#">NP_078950</a> <a href="#">Entrez Gene 79727 Human</a> <a href="#">Q9H9Z2</a>



[View online »](#)

**Background:**

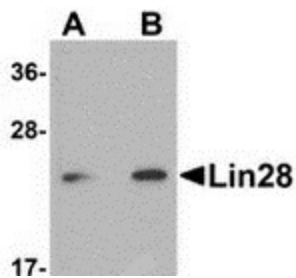
Lin28 is a transcription factor that was first identified through its key role in the pathway of developmental timing in *C. elegans*. The role of Lin28 in development suggested that it might be useful in the creation of stem cells that might be beneficial in cell replacement therapies in the treatment of several degenerative diseases. Artificial stem cells, termed induced pluripotent stem (iPS) cells, can be created by expressing Lin28 in addition to the transcription factors POU5F1, Sox2, and NANOG in mouse fibroblasts. More recently, experiments have demonstrated that iPS cells could be generated using expression plasmids expressing Lin28, Sox2, POU5F1 and c-Myc, eliminating the need for virus introduction, thereby addressing a safety concern for potential use of iPS cells in regenerative medicine.

**Synonyms:**

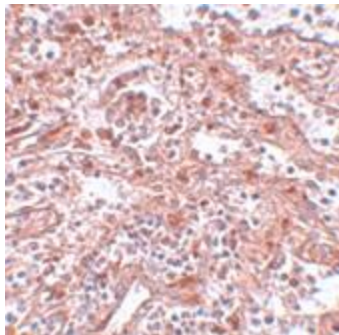
CSDD1; LIN-28; lin-28A; LIN28; ZCCHC1

**Protein Families:**

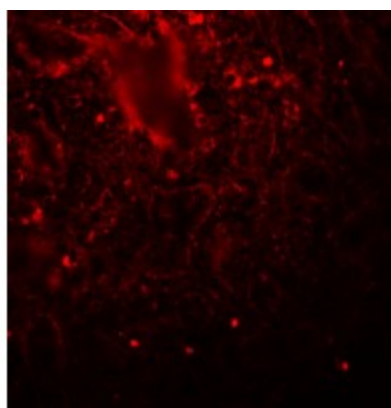
Transcription Factors

**Product images:**

Western blot analysis of Lin28 in Raji cell lysate with Lin28 antibody at (A) 1 and (B) 2 ug/mL.



Immunohistochemistry of KLF4 in human spleen tissue with KLF4 antibody at 5 ug/mL.



Immunofluorescence of LIN28 in human spleen tissue with LIN28 antibody at 20 ug/mL.