

Product datasheet for **TA306921**

ESX1 Rabbit Polyclonal Antibody

Product data:

Product Type:	Primary Antibodies
Applications:	IF, IHC, WB
Recommended Dilution:	WB: 1 - 2 ug/mL, ICC: 2.5 ug/mL, IF: 20 ug/mL
Reactivity:	Human
Host:	Rabbit
Isotype:	IgG
Clonality:	Polyclonal
Immunogen:	ESX1 antibody was raised against a 19 amino acid peptide near the center of human ESX1.
Formulation:	PBS containing 0.02% sodium azide.
Concentration:	1ug/ul
Purification:	Affinity chromatography purified via peptide column
Conjugation:	Unconjugated
Storage:	Store at -20°C as received.
Stability:	Stable for 12 months from date of receipt.
Gene Name:	ESX homeobox 1
Database Link:	NP_703149 Entrez Gene 80712 Human Q8N693

Background: Homeobox proteins are transcription factors that contain a helix-turn-helix DNA binding domain termed the homeodomain. ESX1 is an X-linked homeobox gene primarily expressed in the placenta and testis and contains two functional domains: the homeodomain and the proline-rich domain. During embryogenesis, ESX1 is expressed in the extraembryonic tissues, including the endoderm of the visceral yolk sac, the ectoderm of the chorion and the labyrinthine trophoblast of the chorioallantoic placenta. ESX1 can act like a transcriptional repressor to the human oncogene K-ras and treatment of human cancer cells with an ESX1 protein fragment containing the homeodomain reduces the tumorigenicity of cells containing oncogenic K-ras mutations, suggesting ESX1 may be useful as a therapeutic treatment for these cancers.

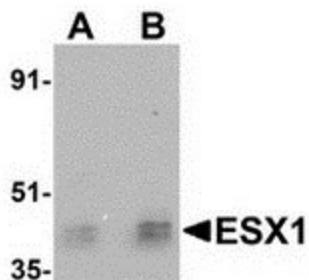


[View online »](#)

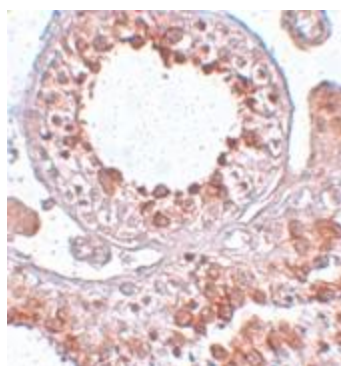
Synonyms: ESX1L; ESXR1

Protein Families: Transcription Factors

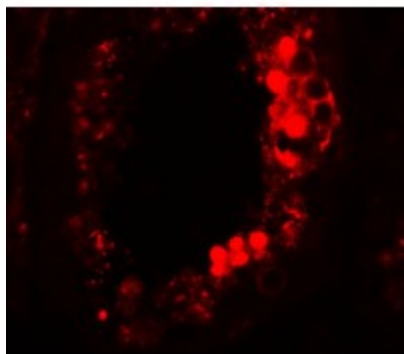
Product images:



Western blot analysis of ESX1 in human testis tissue lysate with ESX1 antibody at (A) 1 and (B) 2 ug/mL.



Immunohistochemistry of ESX1 in human testis tissue with ESX1 antibody at 2.5 ug/mL.



Immunofluorescence of ESX1 in human testis tissue with ESX1 antibody at 20 ug/mL.