

Product datasheet for **TA306919**

CALHM1 Rabbit Polyclonal Antibody

Product data:

Product Type:	Primary Antibodies
Applications:	IF, IHC, WB
Recommended Dilution:	WB: 1 - 2 ug/mL, ICC: 5 ug/mL, IF: 20 ug/mL
Reactivity:	Human, Mouse, Rat
Host:	Rabbit
Isotype:	IgG
Clonality:	Polyclonal
Immunogen:	CALHM1 antibody was raised against a 17 amino acid peptide near the amino terminus of human CALHM1.
Formulation:	PBS containing 0.02% sodium azide.
Concentration:	1ug/ul
Purification:	Affinity chromatography purified via peptide column
Conjugation:	Unconjugated
Storage:	Store at -20°C as received.
Stability:	Stable for 12 months from date of receipt.
Gene Name:	calcium homeostasis modulator 1
Database Link:	NP_001001412 Entrez Gene 499367 Rat Entrez Gene 546729 Mouse Entrez Gene 255022 Human Q8IU99

Background: Alzheimer's disease (AD) is a progressive neurodegenerative disorder characterized by a massive loss of neurons in several brain regions and by the presence of senile plaques comprised of aggregated amyloid- β (Ab) peptides produced by the endoproteolysis of the amyloid precursor protein (APP). The calcium homeostasis modulator 1 (CALHM1) is a recently identified multipass transmembrane glycoprotein that controls cytosolic Ca^{2+} concentration and Ab levels. While some studies suggest CALHM1 is significantly associated with risk of AD, other reports suggest there is no link. CALHM1 has been suggested to modulate the Ca^{2+} -dependent proteolytic process of APP through controlling the level of cytosolic Ca^{2+} .

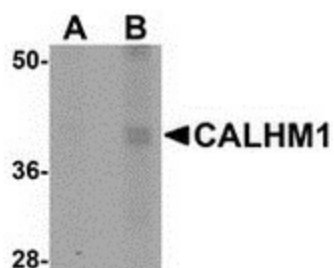


[View online »](#)

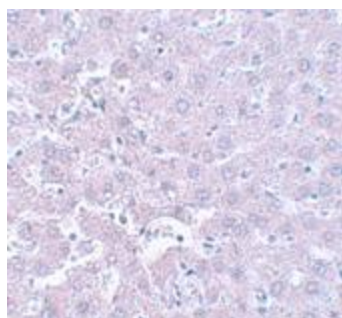
Synonyms: FAM26C

Protein Families: Transmembrane

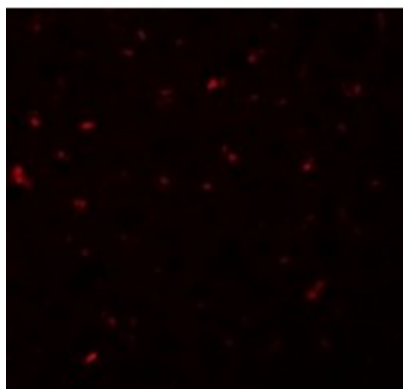
Product images:



Western blot analysis of CALHM1 in rat liver tissue lysate with CALHM1 antibody at (A) 1 and (B) 2 ug/mL.



Immunohistochemistry of CALHM1 in rat liver tissue with CALHM1 antibody at 5 ug/mL.



Immunofluorescence of CALHM1 in Rat Liver cells with CALHM1 antibody at 20 ug/mL.