

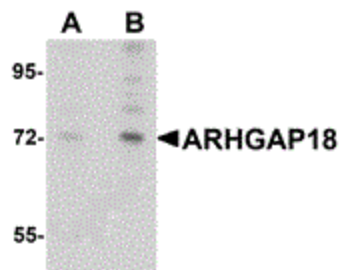
## Product datasheet for **TA306917**

### ARHGAP18 Rabbit Polyclonal Antibody

#### Product data:

Product Type:	Primary Antibodies
Applications:	IF, WB
Recommended Dilution:	WB: 1 - 2 ug/mL, IF: 20 ug/mL
Reactivity:	Human, Mouse, Rat
Host:	Rabbit
Isotype:	IgG
Clonality:	Polyclonal
Immunogen:	ARHGAP18 antibody was raised against a 15 amino acid peptide near the carboxy terminus of human ARHGAP18.
Formulation:	PBS containing 0.02% sodium azide.
Concentration:	1ug/ul
Purification:	Affinity chromatography purified via peptide column
Conjugation:	Unconjugated
Storage:	Store at -20°C as received.
Stability:	Stable for 12 months from date of receipt.
Gene Name:	Rho GTPase activating protein 18
Database Link:	<a href="#">NP_277050</a> <a href="#">Entrez Gene 73910 Mouse</a> <a href="#">Entrez Gene 293947 Rat</a> <a href="#">Entrez Gene 93663 Human</a> <a href="#">Q8N392</a>
Background:	ARHGAP18 is one member of the human RhoGAP family with approximately 80 RhoGAP proteins known to be encoded in the human genome. Rho proteins belong to the Ras superfamily that is composed of over 50 members divided into six families, including Ras, Sar, Rho, Ran, Rab and Arf. Rho GTPases are important regulators of the actin cytoskeleton and consequently influence the shape and migration of cells. ARHGAP18 is linked to Ras, and thus, to EGFR-mediated proliferation, migration and differentiation. ARHGAP18 is precisely contained within chromosome 6q22-24, which has been shown to be linked to schizophrenia, suggesting that ARHGAP18 may play a role in this condition.
Synonyms:	bA307O14.2; MacGAP; SENEX

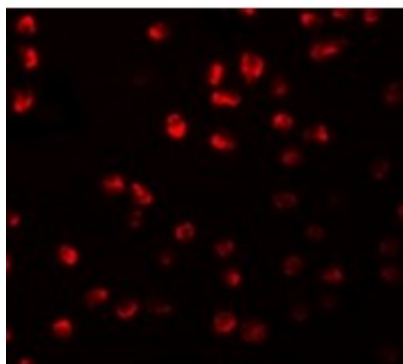

[View online »](#)

**Product images:**


Western blot analysis of ARHGAP18 in 3T3 cell lysate with ARHGAP18 antibody at (A) 1 and (B) 2 ug/mL.



Immunocytochemistry of ARHGAP18 in 3T3 cells with ARHGAP18 antibody at 2.5 ug/mL.



Immunofluorescence of ARHGAP18 in 3T3 cells with ARHGAP18 antibody at 20 ug/mL.