

Product datasheet for **TA306912**

LXR beta (NR1H2) Rabbit Polyclonal Antibody

Product data:

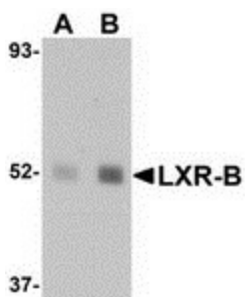
Product Type:	Primary Antibodies
Applications:	WB
Recommended Dilution:	WB: 1 - 2 ug/mL
Reactivity:	Human, Mouse, Rat
Host:	Rabbit
Isotype:	IgG
Clonality:	Polyclonal
Immunogen:	LXR-B antibody was raised against a 14 amino acid peptide from near the amino terminus human LXR-B.
Formulation:	PBS containing 0.02% sodium azide.
Concentration:	1ug/ul
Purification:	Affinity chromatography purified via peptide column
Conjugation:	Unconjugated
Storage:	Store at -20°C as received.
Stability:	Stable for 12 months from date of receipt.
Gene Name:	nuclear receptor subfamily 1 group H member 2
Database Link:	NP_009052 Entrez Gene 22260 Mouse Entrez Gene 58851 Rat Entrez Gene 7376 Human P55055
Background:	LXR-B belongs to the Liver X Receptor family that encodes highly homologous transcription factors. Like the highly homologous LXR-A, LXR-B forms heterodimers with the retinoic acid receptor RXRa, which function as sensors for cellular oxysterols which when activated, increase the expression of genes that control sterol and fatty acid metabolism and homeostasis. Recent experiments have indicated that the LXRs can also modulate both innate and adaptive immune responses. Other studies suggest that genetic variability at the LXR-B gene locus may be a risk factor for Alzheimer's disease. One hypothesis postulates that LXR may be upstream of ApoE and potentiates the risk associated effects of the e3 allele.
Synonyms:	LXR-b; LXRb; NER; NER-I; RIP15; UNR



[View online »](#)

Protein Families: Druggable Genome, Nuclear Hormone Receptor, Transcription Factors

Product images:



Western blot analysis of LXR-B in human lung tissue lysate with LXR-B antibody at (A) 1 and (B) 2 ug/ml.