

Product datasheet for **TA306911**

LXR alpha (NR1H3) Rabbit Polyclonal Antibody

Product data:

Product Type:	Primary Antibodies
Applications:	IF, IHC, WB
Recommended Dilution:	WB: 1 - 2 ug/mL, ICC: 5 ug/mL, IF: 20 ug/mL
Reactivity:	Human, Mouse, Rat
Host:	Rabbit
Isotype:	IgG
Clonality:	Polyclonal
Immunogen:	LXR-A antibody was raised against a 15 amino acid peptide from near the amino terminus human LXR-A.
Formulation:	PBS containing 0.02% sodium azide.
Concentration:	1ug/ul
Purification:	Affinity chromatography purified via peptide column
Conjugation:	Unconjugated
Storage:	Store at -20°C as received.
Stability:	Stable for 12 months from date of receipt.
Gene Name:	nuclear receptor subfamily 1 group H member 3
Database Link:	NP_005684 Entrez Gene 10062 Human Q13133



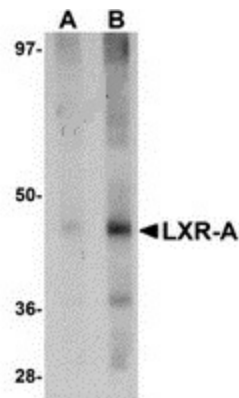
[View online »](#)

Background:

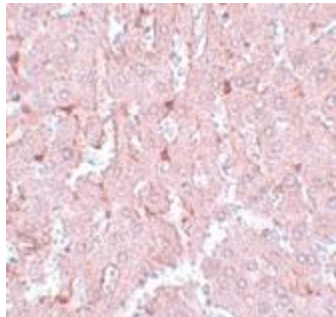
LXR-A belongs to the Liver X Receptor family that encodes highly homologous transcription factors. Like the highly homologous LXR-B, LXR-A forms heterodimers with the retinoic acid receptor RXRalpha, function as sensors for cellular oxysterols which when activated, increase the expression of genes that control sterol and fatty acid metabolism and homeostasis. Recent experiments have indicated that the LXRs can also modulate both innate and adaptive immune responses. Human and mouse tumors produce LXR ligands that inhibit CCR7 expression on maturing dendritic cells (DCs), thereby allowing tumor immunoescape. In mouse models, it was shown that ablating LXR-A signaling led to an immune-mediated strong inhibition of tumor growth, suggesting that manipulation of this pathway may be a viable anti-cancer approach.

Synonyms:

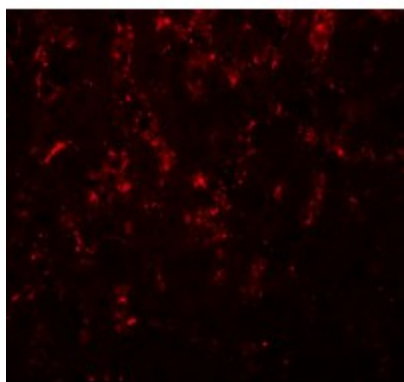
LXR-a; LXRA; RLD-1

Product images:

Western blot analysis of LXR-A in rat liver tissue lysate with LXR-A antibody at (A) 1 and (B) 2 ug/mL.



Immunohistochemistry of LXR-A in rat liver tissue with LXR-A antibody at 5 ug/mL.



Immunofluorescence of LXR-A in rat liver tissue with LXR-A antibody at 20 ug/mL.