

Product datasheet for **TA306910**

REEP4 Rabbit Polyclonal Antibody

Product data:

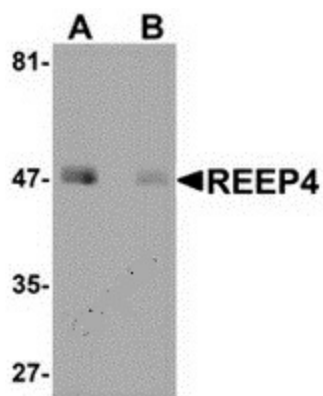
Product Type:	Primary Antibodies
Applications:	WB
Recommended Dilution:	WB: 1 ug/mL
Reactivity:	Human, Mouse, Rat
Host:	Rabbit
Isotype:	IgG
Clonality:	Polyclonal
Immunogen:	REEP4 antibody was raised against a 17 amino acid peptide near the center of human REEP4.
Formulation:	PBS containing 0.02% sodium azide.
Concentration:	1ug/ul
Purification:	Affinity chromatography purified via peptide column
Conjugation:	Unconjugated
Storage:	Store at -20°C as received.
Stability:	Stable for 12 months from date of receipt.
Gene Name:	receptor accessory protein 4
Database Link:	NP_079508 Entrez Gene 72549 Mouse Entrez Gene 306014 Rat Entrez Gene 80346 Human Q9H6H4
Background:	Mammalian odorant receptors require accessory proteins such as RTP1 and RTP2 for functional cell surface expression. Receptor expression-enhancing protein (REEP) family members are transmembrane proteins which interact with odorant receptor proteins and may enhance the odorant receptor responses to odorants. Recently studies have shown other chemosensory receptors such as bitter taste receptors are also influenced by RTP and REEP family members. In studies in Xenopus RNAi to reduce REEP4 levels, embryos showed a slightly kinked body axis and were paralyzed. Further analysis revealed downregulated levels of several neural and muscle markers, suggesting the REEP4 may play a role in the maintenance of both the nervous system and musculature.
Synonyms:	C8orf20; PP432; Yip2c



[View online »](#)

Protein Families: Druggable Genome, Transmembrane

Product images:



Western blot analysis of REEP4 in human lung tissue lysate with REEP4 antibody at 1 ug/ml in (A) the absence and (B) the presence of blocking peptide.