

Product datasheet for **TA306909**

REEP3 Rabbit Polyclonal Antibody

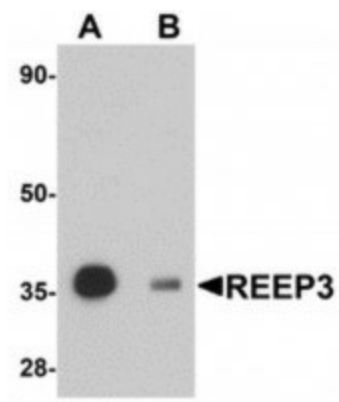
Product data:

| | |
|-----------------------|--|
| Product Type: | Primary Antibodies |
| Applications: | IF, IHC, WB |
| Recommended Dilution: | WB: 1 ug/mL, ICC: 5 ug/mL, IF: 20 ug/mL |
| Reactivity: | Human, Mouse, Rat |
| Host: | Rabbit |
| Isotype: | IgG |
| Clonality: | Polyclonal |
| Immunogen: | REEP3 antibody was raised against a 17 amino acid synthetic peptide near the carboxy terminus of human REEP3. The immunogen is located within the last 50 amino acids of REEP3. |
| Formulation: | PBS containing 0.02% sodium azide. |
| Concentration: | 1ug/ul |
| Purification: | Affinity chromatography purified via peptide column |
| Conjugation: | Unconjugated |
| Storage: | Store at -20°C as received. |
| Stability: | Stable for 12 months from date of receipt. |
| Gene Name: | receptor accessory protein 3 |
| Database Link: | NP_001001330 Entrez Gene 28193 Mouse Entrez Gene 294375 Rat Entrez Gene 221035 Human Q6NUK4 |
| Background: | Mammalian odorant receptors require accessory proteins such as RTP1 and RTP2 for functional cell surface expression. Receptor expression-enhancing protein (REEP) family members are transmembrane proteins which interact with odorant receptor proteins and may enhance the odorant receptor responses to odorants. Recently studies have shown other chemosensory receptors such as bitter taste receptors are also influenced by RTP and REEP family members. REEP3 has also been suggested as a novel candidate gene for autism and as a loci influencing the plasma levels of the liver enzyme alkaline phosphatase. |
| Synonyms: | C10orf74; Yip2b |

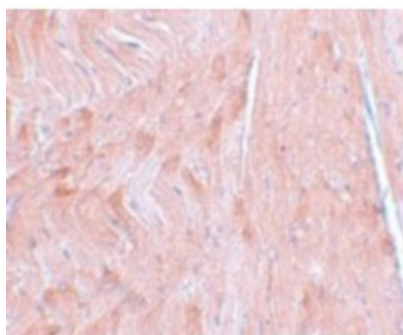

[View online »](#)

Protein Families: Druggable Genome, Transmembrane

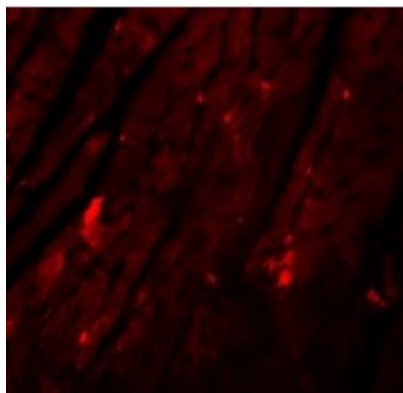
Product images:



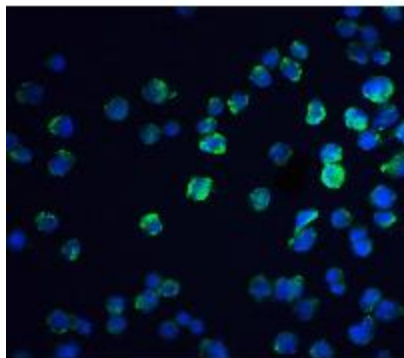
Western blot analysis of REEP3 in rat heart tissue lysate with REEP3 antibody at 1ug/ml in (A) the absence and (B) the presence of blocking peptide.



Immunohistochemistry of REEP3 in mouse heart tissue with REEP3 antibody at 5ug/ml.



Immunofluorescence of REEP3 in mouse heart tissue with REEP3 antibody at 20ug/ml.



Immunofluorescence of REEP3 in A431 cells with REEP3 antibody at 20ug/ml.



Immunocytochemistry of REEP3 in A431 cells with REEP3 antibody at 5ug/ml.