

Product datasheet for **TA306908**

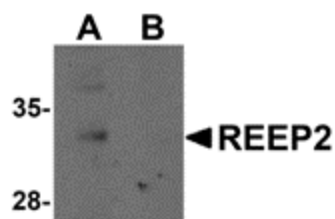
C5orf19 (REEP2) Rabbit Polyclonal Antibody

Product data:

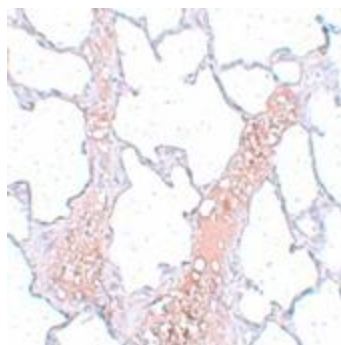
Product Type:	Primary Antibodies
Applications:	IF, IHC, WB
Recommended Dilution:	WB: 1 ug/mL, ICC: 5 ug/mL, IF: 20 ug/mL
Reactivity:	Human, Mouse, Rat
Host:	Rabbit
Isotype:	IgG
Clonality:	Polyclonal
Immunogen:	REEP2 antibody was raised against a 15 amino acid peptide near the center of human REEP2.
Formulation:	PBS containing 0.02% sodium azide.
Concentration:	1ug/ul
Purification:	Affinity chromatography purified via peptide column
Conjugation:	Unconjugated
Storage:	Store at -20°C as received.
Stability:	Stable for 12 months from date of receipt.
Gene Name:	receptor accessory protein 2
Database Link:	NP_057690 Entrez Gene 225362 Mouse Entrez Gene 682105 Rat Entrez Gene 51308 Human Q9BRK0
Background:	Mammalian odorant receptors require accessory proteins such as RTP1 and RTP2 for functional cell surface expression. Receptor expression-enhancing protein (REEP) family members are transmembrane proteins which interact with odorant receptor proteins and may enhance the odorant receptor responses to odorants. Recently studies have shown other chemosensory receptors such as bitter taste receptors are also influenced by RTP and REEP family members.
Synonyms:	C5orf19; SGC32445; SPG72; Yip2d
Protein Families:	Druggable Genome, Transmembrane



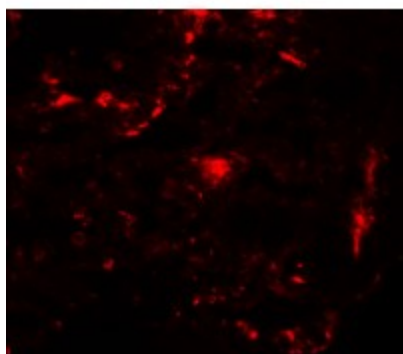
[View online »](#)

Product images:

Western blot analysis of REEP2 in mouse lung tissue lysate with REEP2 antibody at 1 ug/mL in (A) the absence and (B) the presence of blocking peptide.



Immunohistochemistry of REEP2 in rat lung tissue with REEP2 antibody at 5 ug/mL.



Immunofluorescence of REEP2 in rat lung tissue with REEP2 antibody at 20 ug/mL.