

## Product datasheet for **TA306901**

### KCNK18 Rabbit Polyclonal Antibody

#### Product data:

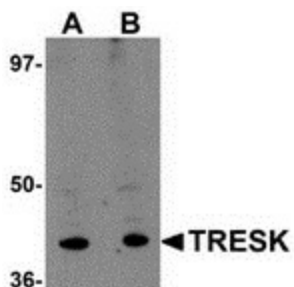
Product Type:	Primary Antibodies
Applications:	IF, IHC, WB
Recommended Dilution:	WB: 1 - 2 ug/mL, ICC: 5 ug/mL, IF: 20 ug/mL
Reactivity:	Human, Mouse, Rat
Host:	Rabbit
Isotype:	IgG
Clonality:	Polyclonal
Immunogen:	TRESK antibody was raised against a 17 amino acid peptide from near the center of human TRESK.
Formulation:	PBS containing 0.02% sodium azide.
Concentration:	1ug/ul
Purification:	Affinity chromatography purified via peptide column
Conjugation:	Unconjugated
Storage:	Store at -20°C as received.
Stability:	Stable for 12 months from date of receipt.
Gene Name:	potassium two pore domain channel subfamily K member 18
Database Link:	<a href="#">NP_862823</a> <a href="#">Entrez Gene 332396 Mouse</a> <a href="#">Entrez Gene 445371 Rat</a> <a href="#">Entrez Gene 338567 Human</a> <a href="#">Q7Z418</a>
Background:	TRESK (TWIK-related spinal cord K <sup>+</sup> channel) is a two-pore domain K <sup>+</sup> channel that induces outward rectification and functions as a background K <sup>+</sup> channel that is abundantly expressed in the spinal cord, thymus, spleen, and leukemic T-lymphocytes. TRESK is activated by increased cytoplasmic calcium concentration through calcineurin as well as by acetylcholine and histamine. It has been suggested that TRESK is linked to acute and chronic pain by activation of calcineurin. Other studies indicate that TRESK may play a role in the regulation of T-cell function and could be an excellent target to treat T-cell originated immune dysfunction.
Synonyms:	K2p18.1; MGR13; TRESK; TRESK-2; TRESK2; TRIK



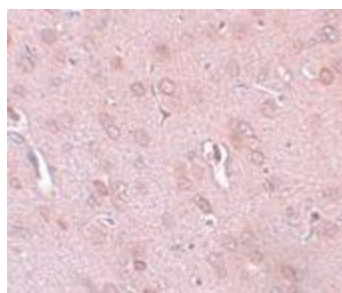
[View online »](#)

Protein Families: Ion Channels: Potassium, Transmembrane

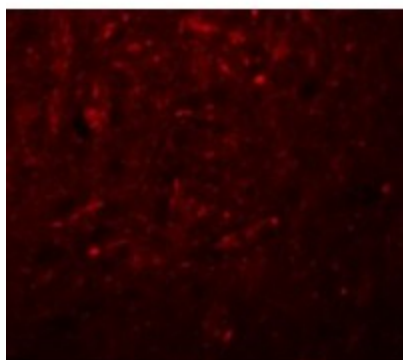
### Product images:



Western blot analysis of TRESK in rat brain tissue lysate with TRESK antibody at (A) 1 and (B) 2 ug/mL.



Immunohistochemistry of TRESK in rat brain tissue with TRESK antibody at 5 ug/mL.



Immunofluorescence of TRESK in Rat Brain cells with TRESK antibody at 20 ug/mL.