

Product datasheet for **TA306900**

PRDM16 Rabbit Polyclonal Antibody

Product data:

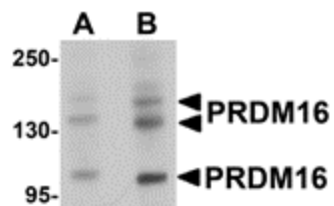
Product Type:	Primary Antibodies
Applications:	IF, IHC, WB
Recommended Dilution:	WB: 1 - 2 ug/mL, ICC: 2.5 ug/mL, IF: 20 ug/mL
Reactivity:	Human, Mouse, Rat
Host:	Rabbit
Isotype:	IgG
Clonality:	Polyclonal
Immunogen:	PRDM16 antibody was raised against a 17 amino acid peptide from near the carboxy terminus of human PRDM16.
Formulation:	PBS containing 0.02% sodium azide.
Purification:	Affinity chromatography purified via peptide column
Conjugation:	Unconjugated
Storage:	Antibody can be stored at 4°C up to one year. Antibodies should not be exposed to prolonged high temperatures.
Stability:	Stable for 12 months from date of receipt.
Gene Name:	PR domain 16
Database Link:	NP_071397 Entrez Gene 70673 Mouse Entrez Gene 100366024 Rat Entrez Gene 63976 Human Q9HAZ2
Background:	PRDM16 is a zinc finger transcription factor and contains an N-terminal PR domain. The reciprocal translocation t(1;3)(p36;q21) occurs in a subset of myelodysplastic syndrome (MDS) and acute myeloid leukemia (AML). This gene is located near the 1p36.3 breakpoint and has been shown to be specifically expressed in the t(1;3)(p36,q21)-positive MDS/AML. The translocation results in the overexpression of a truncated version of this protein that lacks the PR domain, which may play an important role in the pathogenesis of MDS and AML. Recent studies have shown that PRDM16 normally acts as a Smad3 binding protein that may be important for the development of orofacial structures through modulation of the TGF-beta signaling pathway. Other experiments have indicated that PRDM16 controls a bidirectional cell fate switch between skeletal myoblasts and brown fat cells.



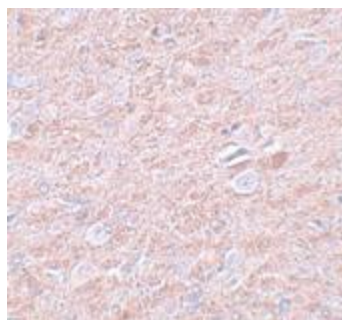
[View online »](#)

Synonyms: CMD1LL; LVNC8; MEL1; PFM13

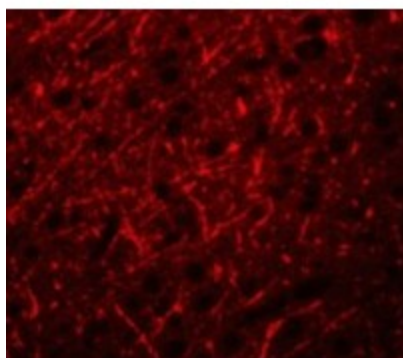
Product images:



Western blot analysis of PRDM16 in rat brain tissue lysate with PRDM16 antibody at (A) 1 and (B) 2 ug/mL.



Immunohistochemistry of PRDM16 in rat brain tissue with PRDM16 antibody at 2.5 ug/mL.



Immunofluorescence of PRDM16 in Human Brain cells with PRDM16 antibody at 20 ug/mL.