

Product datasheet for **TA306899**

PICALM Rabbit Polyclonal Antibody

Product data:

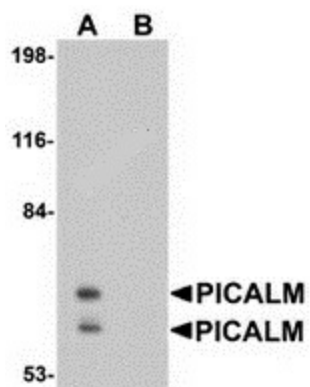
Product Type:	Primary Antibodies
Applications:	IF, WB
Recommended Dilution:	WB: 1 ug/mL, IF: 20 ug/mL
Reactivity:	Human, Mouse, Rat
Host:	Rabbit
Isotype:	IgG
Clonality:	Polyclonal
Immunogen:	PICALM antibody was raised against a 15 amino acid peptide from near the amino terminus of human PICALM.
Formulation:	PBS containing 0.02% sodium azide.
Concentration:	1ug/ul
Purification:	Affinity chromatography purified via peptide column
Conjugation:	Unconjugated
Storage:	Store at -20°C as received.
Stability:	Stable for 12 months from date of receipt.
Gene Name:	phosphatidylinositol binding clathrin assembly protein
Database Link:	NP_009097 Entrez Gene 8301 Human Q13492
Background:	PICALM, also known as the clathrin assembly lymphoid myeloid leukemia (CALM) protein, co-localizes with clathrin at clathrin-coated areas of the plasma membrane and in the Golgi area, and is thought to be an important component of the coated pit internalization machinery. Fusion proteins involving PICALM have been implicated in acute myeloid and T-cell acute lymphoblastic leukemia. PICALM is also expressed in neurons and is present at the synapse where it facilitates the endocytosis of the synaptic vesicle protein VAMP2. Recent studies have identified variants of PICALM associated with Alzheimer's disease and have suggested this protein may play a role in the endocytosis and recycling of the amyloid protein precursor (APP).



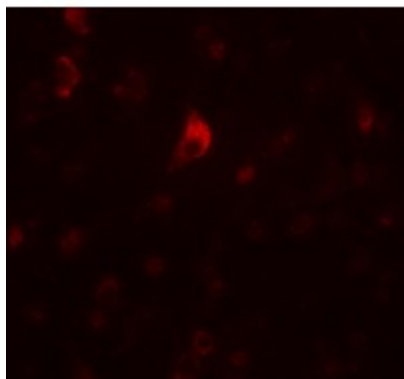
[View online »](#)

Synonyms: CALM; CLTH; LAP

Product images:



Western blot analysis of PICALM in EL4 cell lysate with PICALM antibody at 1 ug/ml in (A) the absence and (B) the presence of blocking peptide.



Immunofluorescence of PICALM in human brain tissue with PICALM antibody at 20 ug/mL.