

Product datasheet for **TA306896**

Girdin (CCDC88A) Rabbit Polyclonal Antibody

Product data:

Product Type:	Primary Antibodies
Applications:	IF, WB
Recommended Dilution:	WB: 1 - 2 ug/mL, IF: 20 ug/mL
Reactivity:	Human, Mouse, Rat
Host:	Rabbit
Isotype:	IgG
Clonality:	Polyclonal
Immunogen:	Girdin antibody was raised against a 16 amino acid peptide from near the carboxy terminus human Girdin.
Formulation:	PBS containing 0.02% sodium azide.
Concentration:	1ug/ul
Purification:	Affinity chromatography purified via peptide column
Conjugation:	Unconjugated
Storage:	Store at -20°C as received.
Stability:	Stable for 12 months from date of receipt.
Gene Name:	coiled-coil domain containing 88A
Database Link:	NP_060554 Entrez Gene 55704 Human Q3V6T2

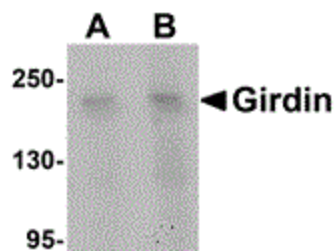
Background: Girdin is a Galpha-interacting protein that can enhance the activation of the protein kinase Akt, remodel the actin cytoskeleton, and is thought to be involved in the regulation of cell migration and cancer metastasis. It has recently been shown that Girdin interacts with Disrupted-in-Schizophrenia 1 (DISC1), a susceptibility gene for major psychiatric disorders. DISC1 is thought to be involved in the migration, positioning and differentiation of dentate granule cells (DGCs) during development; depletion of Girdin or blocking the Girdin-DISC1 interaction results in defects in axonal sprouting in the CA3 region of the hippocampus and overextended migration of mispositioning of DGCs, suggesting the Girdin plays a role in postnatal neurogenesis in the dentate gyrus.



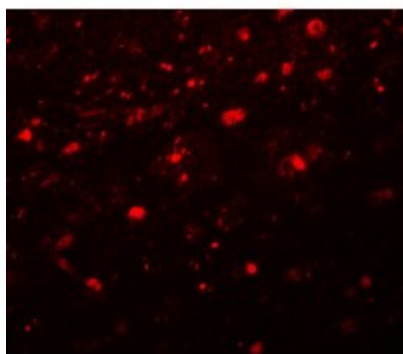
[View online »](#)

Synonyms: APE; GIRDIN; GIV; GRDN; HkRP1; KIAA1212; PEHO

Product images:



Western blot analysis of Girdin in rat brain tissue lysate with Girdin antibody at (A) 1 and (B) 2 ug/ml.



Immunofluorescence of Girdin in cells with Girdin antibody at 20 ug/mL.