

Product datasheet for **TA306895**

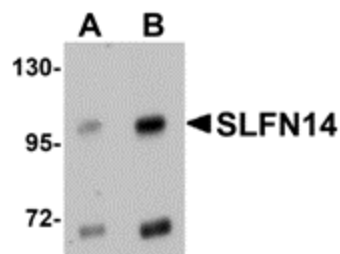
SLFN14 Rabbit Polyclonal Antibody

Product data:

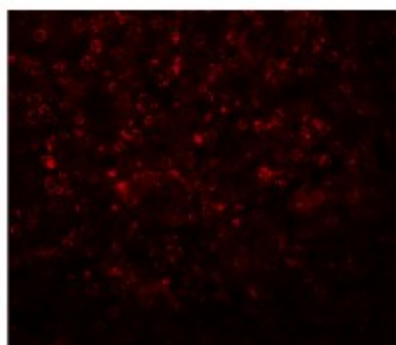
Product Type:	Primary Antibodies
Applications:	IF, WB
Recommended Dilution:	WB: 1 - 2 ug/mL, IF: 20 ug/mL
Reactivity:	Human, Mouse
Host:	Rabbit
Isotype:	IgG
Clonality:	Polyclonal
Immunogen:	SLFN14 antibody was raised against a 16 amino acid peptide from near the carboxy terminus human SLFN14.
Formulation:	PBS containing 0.02% sodium azide.
Concentration:	1ug/ul
Purification:	Affinity chromatography purified via peptide column
Conjugation:	Unconjugated
Storage:	Store at -20°C as received.
Stability:	Stable for 12 months from date of receipt.
Gene Name:	schlafen family member 14
Database Link:	NP_001123292 Entrez Gene 237890 Mouse Entrez Gene 342618 Human P0C7P3
Background:	Despite being first described several years ago, the roles of the Schlafen (SLFN) family of proteins remain largely unknown. The SLFN genes are preferentially expressed in lymphoid tissues and differentially regulated during thymocyte maturation. It is thought that many play roles in cell growth, hemopoietic cell differentiation, and T cell development and maturation. Most members contain at least one divergent AAA domain (AAA_4) that may play a role in ATP binding. SLFN14 is a recently identified member of the SLFN family; its role has yet to be determined.
Synonyms:	BDPLT20


[View online »](#)

Product images:



Western blot analysis of SLFN14 in mouse kidney tissue lysate with SLFN14 antibody at (A) 1 and (B) 2 ug/ml.



Immunofluorescence of SLFN14 in mouse kidney tissue with SLFN14 antibody at 20 ug/mL.