

Product datasheet for **TA306893**

C3orf54 (FAM212A) Rabbit Polyclonal Antibody

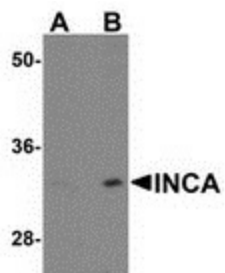
Product data:

Product Type:	Primary Antibodies
Applications:	IF, WB
Recommended Dilution:	WB: 1 - 2 ug/mL
Reactivity:	Human, Mouse, Rat
Host:	Rabbit
Isotype:	IgG
Clonality:	Polyclonal
Immunogen:	INCA1 antibody was raised against a 15 amino acid peptide from near the carboxy terminus of human INCA1.
Formulation:	PBS containing 0.02% sodium azide.
Concentration:	1ug/ul
Purification:	Affinity chromatography purified via peptide column
Conjugation:	Unconjugated
Storage:	Store at -20°C as received.
Stability:	Stable for 12 months from date of receipt.
Gene Name:	family with sequence similarity 212 member A
Database Link:	NP_976248 Entrez Gene 68176 Mouse Entrez Gene 316001 Rat Entrez Gene 389119 Human Q96EL1
Background:	INCA1 was isolated through a yeast triple hybrid approach to identify interaction partners of the cyclin A1-CDK2 heterodimer. INCA1 is evolutionarily conserved and has no homology to any known proteins. Like Cyclin A1, INCA1 is highly expressed in testis with highest levels observed at various points of testis maturation. It has been suggested that the complex of INCA1 and the cyclinA1-CDK2 dimer plays a role in several signaling pathways important for cell cycle control and meiosis. Recent experiments have shown that INCA1 also interacts with the testis protein RSB-66 and this interaction takes place in the cytoplasm.
Synonyms:	C3orf54; INKA1

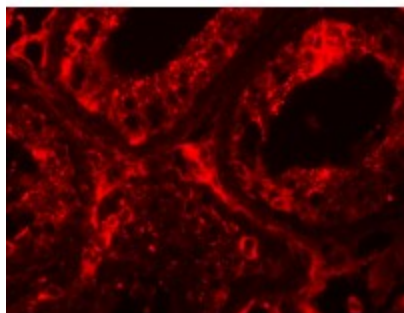


[View online »](#)

Product images:



Western blot analysis of INCA1 in EL4 cell lysate with INCA1 antibody at (A) 1 and (B) 2 ug/ml.



Immunofluorescence of INCA1 in human testis tissue with INCA1 antibody at 20 ug/mL.