

## Product datasheet for **TA306892**

### RHBDD3 Rabbit Polyclonal Antibody

#### Product data:

Product Type:	Primary Antibodies
Applications:	IF, WB
Recommended Dilution:	WB: 1 ug/mL, IF: 20 ug/mL
Reactivity:	Human, Mouse, Rat
Host:	Rabbit
Isotype:	IgG
Clonality:	Polyclonal
Immunogen:	RHBDD3 antibody was raised against a 13 amino acid peptide from near the center of human RHBDD3 .
Formulation:	PBS containing 0.02% sodium azide.
Concentration:	1ug/ul
Purification:	Affinity chromatography purified via peptide column
Conjugation:	Unconjugated
Storage:	Store at -20°C as received.
Stability:	Stable for 12 months from date of receipt.
Gene Name:	rhomboid domain containing 3
Database Link:	<a href="#">NP_036397</a> <a href="#">Entrez Gene 279766 Mouse</a> <a href="#">Entrez Gene 289753 Rat</a> <a href="#">Entrez Gene 25807 Human</a> <a href="#">Q9Y3P4</a>



[View online »](#)

**Background:**

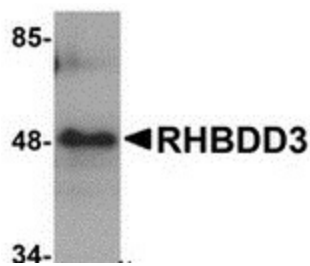
The Rhomboid family of proteins is made up of several widely conserved polytopic membrane serine proteases that play roles in growth and development. RHBDD3 was initially identified as a novel pituitary tumor apoptosis gene (PTAG) whose expression was reduced in certain pituitary adenomas. Overexpression of RHBDD3 in AtT20 cells showed an increase in apoptotic activity and caspase activation in response to bromocriptine, and apoptosis-inducing dopamine D2 analog, suggesting that reactivation of RHBDD3 in tumors may be a therapeutically useful tool. Later experiments also showed that RHBDD3 expression is also reduced in several primary colorectal tumors, indicating that loss of RHBDD3 contributes to a blunted apoptotic response and probably predisposes cells towards malignant transformation.

**Synonyms:**

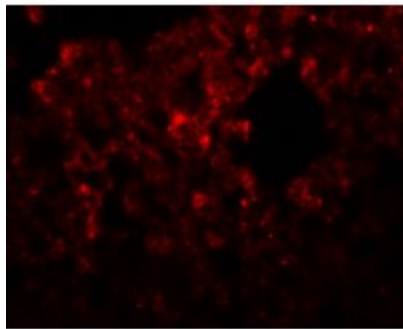
C22orf3; HS984G1A; PTAG

**Protein Families:**

Druggable Genome, Transmembrane

**Product images:**

Western blot analysis of RHBDD3 in rat lung tissue lysate with RHBDD3 antibody at 1 ug/ml.



Immunofluorescence of RHBDD3 in rat lung tissue with RHBDD3 antibody at 20 ug/mL.