

## Product datasheet for **TA306891**

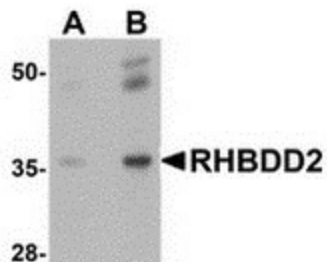
### RHBDD2 Rabbit Polyclonal Antibody

#### Product data:

|                       |   |
|-----------------------|---|
| Product Type:         | Primary Antibodies  |
| Applications:         | IF, IHC, WB   |
| Recommended Dilution: | WB: 1 - 2 ug/mL, IF: 20 ug/mL   |
| Reactivity:           | Human, Mouse, Rat   |
| Host:                 | Rabbit  |
| Isotype:              | IgG   |
| Clonality:            | Polyclonal  |
| Immunogen:            | RHBDD2 antibody was raised against an 18 amino acid peptide from near the center of human RHBDD2.   |
| Formulation:          | PBS containing 0.02% sodium azide.  |
| Purification:         | Affinity chromatography purified via peptide column   |
| Conjugation:          | Unconjugated  |
| Storage:              | Store at -20°C as received.   |
| Stability:            | Stable for 12 months from date of receipt.  |
| Gene Name:            | rhomboid domain containing 2  |
| Database Link:        | <a href="#">NP_001035546</a><br><a href="#">Entrez Gene 215160</a> <a href="#">MouseEntrez Gene 360793</a> <a href="#">RatEntrez Gene 57414</a> <a href="#">Human Q6NTF9</a>  |
| Background:           | The Rhomboid family of proteins is made up of several widely conserved polytopic membrane serine proteases that play roles in growth and development. Little is known about the role of RHBDD2. Its overexpression in breast carcinoma appears to be an indicator of poor prognosis and may play a role in breast cancer progression. The related proteins RHBDD1 and RHBDD3 are both involved in the regulation of apoptosis, suggesting that RHBDD2 may also be involved in the modulation of apoptotic activity. |
| Synonyms:             | NPD007; RHBDL7  |
| Protein Families:     | Transmembrane   |



[View online »](#)

**Product images:**


Western blot analysis of RHBDD2 in rat lung tissue lysate with RHBDD2 antibody at (A) 1 and (B) 2 ug/ml.

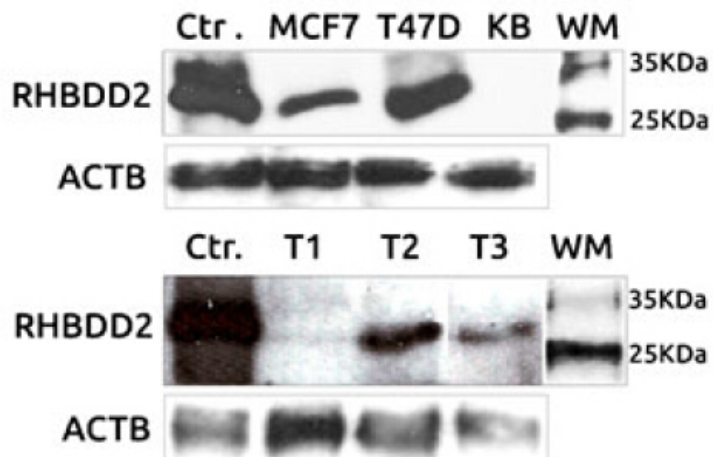


Figure from citation: Western Blot of RHBDD2 protein level by using anti-RHBDD2 antibody in RHBDD2 HEK293T overexpression lysate. [View Citation](#)

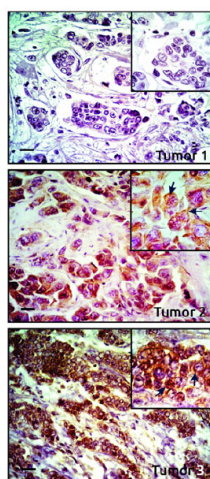
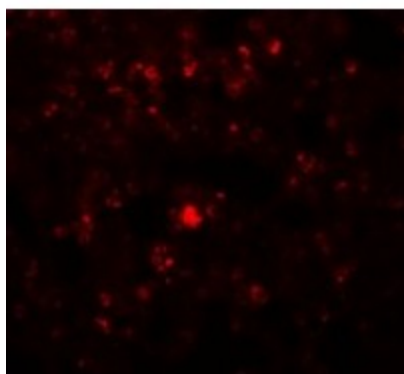


Figure from citation: Immunohistochemical staining for RHBDD2 protein by using anti-RHBDD2 antibody in human breast carcinomas showing negative (Tumor 1) and positive reactions (Tumor 2 and Tumor 3). The image magnification is  $\times 400$ , and for the upper right inset  $\times 1,000$ . Arrows indicate brown positive staining localized in the perinuclear area of the cells. Scalebar=20  $\mu\text{m}$ . Dilution: 1:150 [View Citation](#)



Immunofluorescence of RHBDD2 in Rat Lung cells with RHBDD2 antibody at 20 ug/mL.