

Product datasheet for **TA306888**

TMEM38A Rabbit Polyclonal Antibody

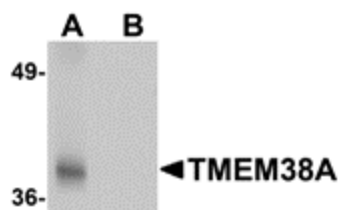
Product data:

Product Type:	Primary Antibodies
Applications:	IF, WB
Recommended Dilution:	WB: 1 ug/mL, IF: 20 ug/mL
Reactivity:	Human, Mouse, Rat
Host:	Rabbit
Isotype:	IgG
Clonality:	Polyclonal
Immunogen:	TMEM38A antibody was raised against a 17 amino acid peptide from near the carboxy terminus of human TMEM38A.
Formulation:	PBS containing 0.02% sodium azide.
Purification:	Affinity chromatography purified via peptide column
Conjugation:	Unconjugated
Storage:	Store at -20°C as received.
Stability:	Stable for 12 months from date of receipt.
Gene Name:	transmembrane protein 38A
Database Link:	AAH01195 Entrez Gene 79041 Human Q9H6F2
Background:	TMEM38A and TMEM38B are two recently identified trimeric intracellular cation (TRIC) channel subtypes. TMEM38A is preferentially expressed in excitable tissues such as striated muscle and brain and localizes to the sarcoplasmic reticulum (SR) in muscle tissues. Mice deficient in both TMEM38A and TMEM38B suffer embryonic cardiac failure; the cardiac myocytes display severe dysfunction in SR Ca ²⁺ handling, weakened Ca ²⁺ release, and reduced K ⁺ permeability indicating that the TRIC cation channels are likely to act as counter-ion channels that function in synchronization with Ca ²⁺ release from intracellular stores. Other experiments have shown that TMEM38A and TMEM38B can act with junctophilin proteins to support efficient ryanodine receptor-mediated Ca ²⁺ release in muscle cells.
Synonyms:	TRIC-A; TRICA

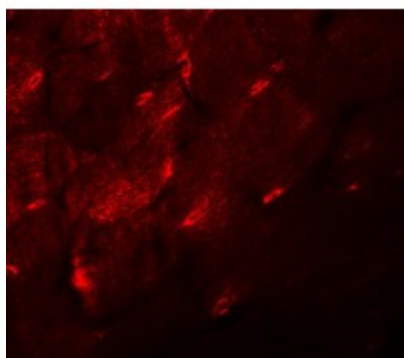


[View online »](#)

Product images:



Western blot analysis of TMEM38A in rat skeletal muscle tissue lysate with TMEM38A antibody at 1 ug/ml in (A) the absence and (B) the presence of blocking peptide.



Immunofluorescence of TMEM38A in mouse skeletal muscle tissue with TMEM38A antibody at 20 ug/mL.