

Product datasheet for **TA306887**

PPAPDC3 (PLPP7) Rabbit Polyclonal Antibody

Product data:

Product Type:	Primary Antibodies
Applications:	IF, WB
Recommended Dilution:	WB: 1 - 2 ug/mL, IF: 20 ug/mL
Reactivity:	Human, Mouse, Rat
Host:	Rabbit
Isotype:	IgG
Clonality:	Polyclonal
Immunogen:	PPAPDC3 antibody was raised against a 19 amino acid peptide from near the amino of terminus human PPAPDC3.
Formulation:	PBS containing 0.02% sodium azide.
Concentration:	1ug/ul
Purification:	Affinity chromatography purified via peptide column
Conjugation:	Unconjugated
Storage:	Store at -20°C as received.
Stability:	Stable for 12 months from date of receipt.
Gene Name:	phospholipid phosphatase 7 (inactive)
Database Link:	NP_116117 Entrez Gene 227721 Mouse Entrez Gene 296635 Rat Entrez Gene 84814 Human Q8NBV4

Background: PPAPDC3, also known as nuclear envelope transmembrane protein 39 (NET39), was initially discovered in an in silico screen for secreted or membrane proteins. It is a member of the PAP2 superfamily of phosphatases and haloperoxidases. PPAPDC3 has recently been shown to act as a negative regulator of myoblast differentiation by diminishing the activity of the mammalian target of rapamycin TOR. PPAPDC3 is highly expressed in cardiac and skeletal muscle and becomes strongly upregulated during cultured myoblast differentiation tissues. Overexpression of PPAPDC3 in myoblasts repressed myogenesis while knockdown by RNA interference promoted differentiation indicating its part in the regulatory mechanism for myogenesis.

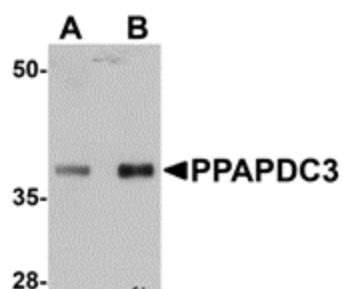


[View online »](#)

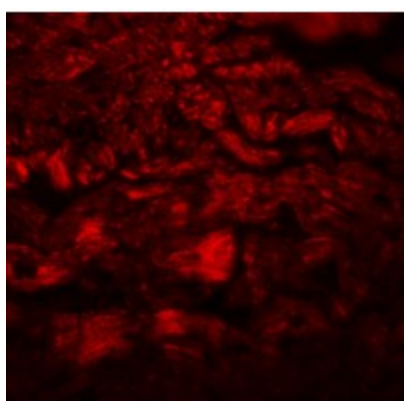
Synonyms: C9orf67; NET39; PPAPDC3

Protein Families: Transmembrane

Product images:



Western blot analysis of PPAPDC3 in mouse heart tissue lysate with PPAPDC3 antibody at (A) 1 and (B) 2 ug/ml.



Immunofluorescence of PPAPDC3 in mouse heart tissue with PPAPDC3 antibody at 20 ug/mL.