

Product datasheet for **TA306886**

PLPP6 Rabbit Polyclonal Antibody

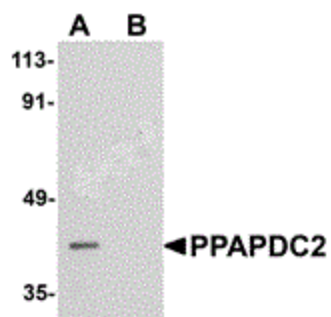
Product data:

Product Type:	Primary Antibodies
Applications:	IF, WB
Recommended Dilution:	WB: 1 ug/mL, IF: 20 ug/mL
Reactivity:	Human, Mouse, Rat
Host:	Rabbit
Isotype:	IgG
Clonality:	Polyclonal
Immunogen:	PPAPDC2 antibody was raised against a 13 amino acid peptide from near the carboxy terminus human PPAPDC2.
Formulation:	PBS containing 0.02% sodium azide.
Concentration:	1ug/ul
Purification:	Affinity chromatography purified via peptide column
Conjugation:	Unconjugated
Storage:	Store at -20°C as received.
Stability:	Stable for 12 months from date of receipt.
Gene Name:	phospholipid phosphatase 6
Database Link:	NP_982278 Entrez Gene 74411 Mouse Entrez Gene 619549 Rat Entrez Gene 403313 Human Q8IY26
Background:	PPAPDC2 is a phosphatase that dephosphorylates Presqualene diphosphate (PSDP) into presqualene monophosphate (PSMP), suggesting that it may have important role in innate immunity. PSDP is a bioactive lipid that rapidly remodels to PSMP upon cell activation. PPAPDC2 displays diphosphate phosphatase activity with a substrate preference for PSDP > FDP > phosphatidic acid. PPAPDC2 activity is independent of Mg ²⁺ and has been identified in activated human neutrophil (PMN) extracts. It is widely expressed in human tissues. Recent studies shows PPAPDC2 is a functional isoprenoid diphosphate phosphatase.
Synonyms:	bA6J24.6; PDP1; PPAPDC2; PSDP
Protein Families:	Transmembrane

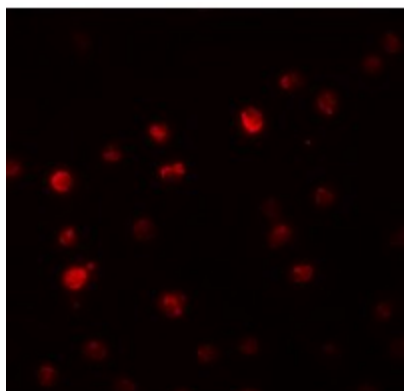


[View online »](#)

Product images:



Western blot analysis of PPAPDC2 in Raji cell lysate with PPAPDC2 antibody at 1 ug/ml in (A) the absence and (B) the presence of blocking peptide.



Immunofluorescence of PPAPDC2 in Raji cells with PPAPDC2 antibody at 20 ug/mL.