

## Product datasheet for **TA306885**

### PPAPDC1B (PLPP5) Rabbit Polyclonal Antibody

#### Product data:

Product Type:	Primary Antibodies
Applications:	WB
Recommended Dilution:	WB: 1 - 2 ug/mL
Reactivity:	Human, Mouse
Host:	Rabbit
Isotype:	IgG
Clonality:	Polyclonal
Immunogen:	PPAPDC1B antibody was raised against a 14 amino acid peptide near the amino terminus of human PPAPDC1B.
Formulation:	PBS containing 0.02% sodium azide.
Concentration:	1ug/ul
Purification:	Affinity chromatography purified via peptide column
Conjugation:	Unconjugated
Storage:	Store at -20°C as received.
Stability:	Stable for 12 months from date of receipt.
Gene Name:	phospholipid phosphatase 5
Database Link:	<a href="#">NP_001096029</a> <a href="#">Entrez Gene 71910 Mouse</a> <a href="#">Entrez Gene 84513 Human</a> <a href="#">Q8NEB5</a>



[View online »](#)

**Background:**

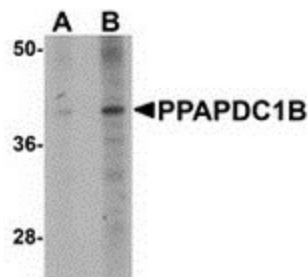
Phosphatidate phosphatase (PAP) plays important role in lipid-signaling metabolism in eukaryotic cells. Two distinct types of PAP (PAP1 and PAP2) activity have been distinguished by their subcellular localization and differential sensitivity to N-ethylmaleimide (NEM) and  $Mg^{2+}$ . A yeast diacylglycerol pyrophosphate (DGPP) phosphatase (DPP1) and mammalian DGPP phosphatase (PAP2) have been identified as  $Mg^{2+}$ -independent and NEM-insensitive membrane-associated. PPAPDC1A (also known as DPPL2) and PPAPDC1B (DPPL1) form a novel type of  $Mg^{2+}$ -independent and NEM-sensitive mammalian phosphatidate phosphatase showing broad substrate specificity. Knockdown experiments indicated that this protein is involved with multiple cell signaling pathways, including the JAK-Stat3, MAP kinase, and PKC pathways. PPAPDC1B may also potentiate the estrogen receptor pathway by down-regulating DUSP22.

**Synonyms:**

DPPL1; HTPAP; PPAPDC1B

**Protein Families:**

Transmembrane

**Product images:**

Western blot analysis of PPAPDC1B in EL4 cell lysate with PPAPDC1B antibody at (A) 1 and (B) 2 ug/ml.