

## Product datasheet for **TA306884**

### PPAPDC1A (PLPP4) Rabbit Polyclonal Antibody

#### Product data:

Product Type:	Primary Antibodies
Applications:	IF, WB
Recommended Dilution:	WB: 1 ug/mL, IF: 20 ug/mL
Reactivity:	Human, Mouse, Rat
Host:	Rabbit
Isotype:	IgG
Clonality:	Polyclonal
Immunogen:	PPAPDC1A antibody was raised against a 14 amino acid peptide near the carboxy terminus of human PPAPDC1A.
Formulation:	PBS containing 0.02% sodium azide.
Concentration:	1ug/ul
Purification:	Affinity chromatography purified via peptide column
Conjugation:	Unconjugated
Storage:	Store at -20°C as received.
Stability:	Stable for 12 months from date of receipt.
Gene Name:	phospholipid phosphatase 4
Database Link:	<a href="#">NP_001025230</a>

[Entrez Gene 309014 Rat](#)[Entrez Gene 381925 Mouse](#)[Entrez Gene 196051 Human](#)  
[Q5VZY2](#)

**Background:** Phosphatidate phosphatase (PAP) plays important role in lipid-signaling metabolism in eukaryotic cells. Two distinct types of PAP (PAP1 and PAP2) activity have been distinguished by their subcellular localization and differential sensitivity to N-ethylmaleimide(NEM) and Mg<sup>2+</sup>. A yeast diacylglycerol pyrophosphate (DGPP) phosphatase (DPP1) and mammalian DGPP phosphatase (PAP2) have been identified as Mg<sup>2+</sup>-independent and NEM-insensitive membrane-associated. PPAPDC1A (also known as DPPL2) and PPAPDC1B (DPPL1) form a novel type of Mg<sup>2+</sup>-independent and NEM-sensitive mammalian phosphatidate phosphatase showing broad substrate specificity. PPAPDC1A is preferentially expressed in endothelial cells. Studies of PPAPDC1A and PAP activity suggest that they may play a role in angiogenesis.

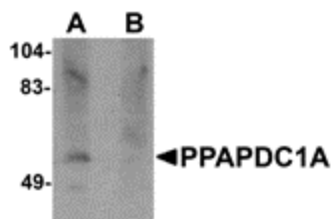


[View online »](#)

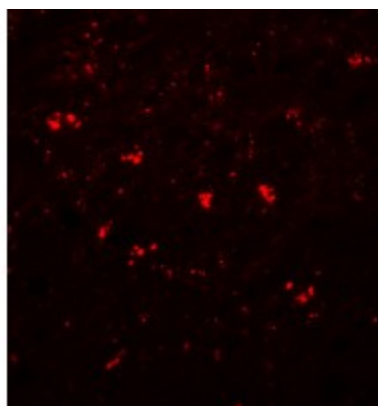
Synonyms: DPPL2; PPAPDC1; PPAPDC1A

Protein Families: Transmembrane

### Product images:



Western blot analysis of PPAPDC1A in human brain tissue lysate with PPAPDC1A antibody at 1 ug/ml in (A) the absence and (B) the presence of blocking peptide.



Immunofluorescence of PPAPDC1A in human brain tissue with PPAPDC1A antibody at 20 ug/mL.