

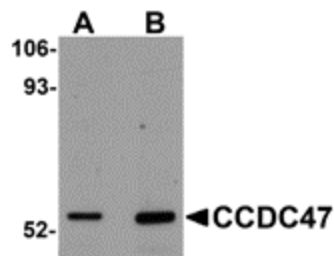
## Product datasheet for **TA306882**

### CCDC47 Rabbit Polyclonal Antibody

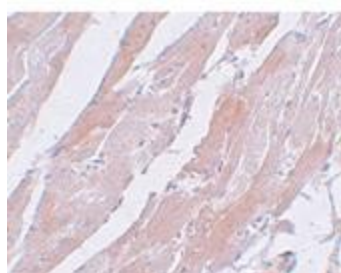
#### Product data:

Product Type:	Primary Antibodies
Applications:	IF, IHC, WB
Recommended Dilution:	WB: 1 - 2 ug/mL, ICC: 5 ug/mL, IF: 20 ug/mL
Reactivity:	Human, Mouse, Rat
Host:	Rabbit
Isotype:	IgG
Clonality:	Polyclonal
Immunogen:	CCDC47 antibody was raised against a 15 amino acid peptide from near the carboxy terminus of human CCDC47.
Formulation:	PBS containing 0.02% sodium azide.
Concentration:	1ug/ul
Purification:	Affinity chromatography purified via peptide column
Conjugation:	Unconjugated
Storage:	Store at -20°C as received.
Stability:	Stable for 12 months from date of receipt.
Gene Name:	coiled-coil domain containing 47
Database Link:	<a href="#">NP_064583</a> <a href="#">Entrez Gene 67163 Mouse</a> <a href="#">Entrez Gene 303606 Rat</a> <a href="#">Entrez Gene 57003 Human</a> <a href="#">Q96A33</a>
Background:	The coiled-coil domain is a common protein motif that is often involved in protein oligomerization and is found in proteins such as transcription factors and intermediate filaments. The CCDC47 gene maps to chromosome 17 at 17q23.3. Little is known about this single-pass membrane protein except that the coiled-coil domain is within the cytosolic domain near the carboxy terminus.
Synonyms:	GK001; MSTP041

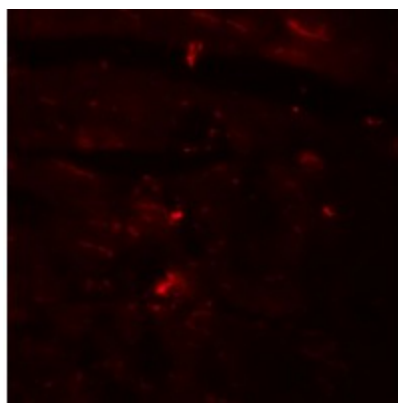

[View online »](#)

**Product images:**


Western blot analysis of CCDC47 in mouse heart tissue lysate with CCDC47 antibody at (A) 1 and (B) 2 ug/mL.



Immunohistochemistry of CCDC47 in mouse heart tissue with CCDC47 antibody at 5 ug/mL.



Immunofluorescence of CDCC47 in mouse heart tissue with CDCC47 antibody at 20 ug/mL.